

**EXPERIMENTS**

- 1. You have 30 minutes to read “EXAMINATION RULES” , “EXPERIMENT INSTRUCTIONS” , “CALCULATOR INSTRUCTIONS” , and whole exam sheets and to plan your experiments.**

- 2. Do NOT start your experiments before the “START” whistle is blown. Otherwise, you will receive a penalty.**

EXAMINATION RULES

1. You are NOT allowed to bring any personal items into the examination room, except for personal medicine or approved personal medical equipment.
2. You must sit at your designated table.
3. Check the stationery items (pen, calculator, and rough book) provided by the organizers.
4. Do NOT start your experiments before the “START” whistle.
5. You are NOT allowed to leave the examination room during the experiment, except in an emergency in which case you will be accompanied by a supervisor/volunteer/invigilator.
6. Do NOT disturb other competitors. If you need assistance, raise your hand and wait for a supervisor to come.
7. You can ONLY ask questions and discuss the experiments with your own team members. You must STAY at your table until the end of the time allocated for the experiments, even if you have finished the experiments or do not wish to continue.
8. At the end of the experiment time you will hear the “STOP” whistle. Do NOT write anything more on the answer sheet after this stop whistle. Arrange the exam, answer sheets, and the stationary items (pen, calculator, and rough book) neatly on your desk. Do NOT leave the room before all the answer sheets have been collected.

**EXPERIMENTS**

EXPERIMENT INSTRUCTIONS

1. After the “START” whistle, you will have 3 hours and 30 minutes to complete the experiments.
2. Use only the pen provided by the organizers (not pencil).
3. The total number of experiments is 3. Check you have a complete set of the exam sheets (15 pages, page 4 – page 18) and answer sheets (10 pages). Raise your hand, if you find any missing sheets.
4. NOW write your name, code, country and signature in your first answer sheet, and your name and code in the next pages of your answer sheets.
5. Read carefully the experimental procedures and questions and write your answers in the corresponding boxes of the answer sheets.
6. When units are provided in the answer sheets, you have to write the answers correctly for the units.
7. You MUST wear a **Lab Coat** and **Gloves** during the experiments.
8. Only the answer sheets will be evaluated. Before writing your answers on the answer sheets, use the rough book provided.
10. Point rules: Each question marking



EXPERIMENTS

CALCULATOR INSTRUCTIONS

1. Turning on: Press **ON/C**.
2. Turning off: Press **2ndF** **ON/C**.
3. Clearing data: Press **ON/C**.
4. Addition, subtraction, multiplication, division

Example 1) $45 + \frac{285}{3}$

ON/C 45 **+** 285 **÷** 3 **=** 140.

Example 2) $\frac{18+6}{15-8}$

ON/C (18 **+** 6 **)** **÷** (15 **-** 8 **)** **=**
3.428571429

Example 3) $42 \times (-5) + 120$

ON/C 42 **×** 5 **+/-** **+** 120 **=** -90.

ON/C 42 **×** (**-** 5 **)** **+** 120 **=** -90.

5. Exponential

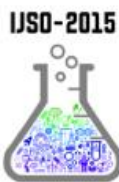
Example 1) 8.6^{-2}

ON/C 8.6 **y^x** 2 **+/-** **=** 0.013520822

Example 2) 6.1×10^{23}

ON/C 6.1 **×** 10 **y^x** 23 **=** 6.1×10^{23}

6. To delete a number/function, move the cursor to the number/function you wish to delete, then press **DEL**. If the cursor is located at the right end of a number/function, the **DEL** key will function as a back space key.



EXPERIMENTS

Introduction of Experiments

“Gam-Gyul” (Figure 1), a seedless and easy-peeling citrus species, is one of the most popular fruits in Korea with a unique ‘sweet’ and ‘sour’ taste. All of you have already tasted “Gam-Gyul” during your stay in Korea.



Figure 1. Gam-Gyul

In this competition, you will perform the following three experiments related to “Gam-Gyul”.

Experiment I. Determination of the Densities of Fruit Juices

Experiment II. Determination of the Citric Acid Contents of Fruit Juices

Experiment III. Anatomy of Fruits and Seeds

In experiments I and II, mandarin (Gam-Gyul) and apple juices will be analyzed. In experiment III, you will observe the inside of some fruits.

Have Fun!



EXPERIMENTS

Experiment I: Determination of the Densities of Fruit Juices

1. Background

[Hooke's Law]

Hooke's law is a principle of physics that states that the force F needed to extend or compress a spring by some distance x is proportional to that distance. That is: $F = -kx$, where k is the spring constant, characteristic of the spring, its stiffness.

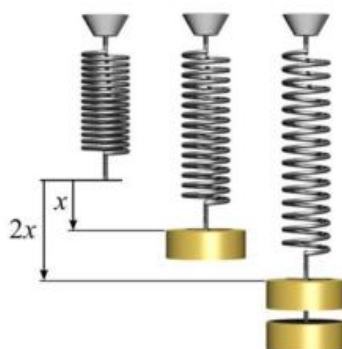


Figure I-1. Hooke's law

[Archimedes' Principle]

Any object, wholly or partially immersed in a fluid, is buoyed up by a force equal to the weight of the fluid displaced by the object.



2. Materials

Equipment	Materials
Support stand and clamp	20 g weight
Spring	50 g weight (x3)
50 cm ruler	Fresh juices (mandarin and apple)
100 mL graduated cylinder	Distilled water
Kimwipes (cleaning tissue)	

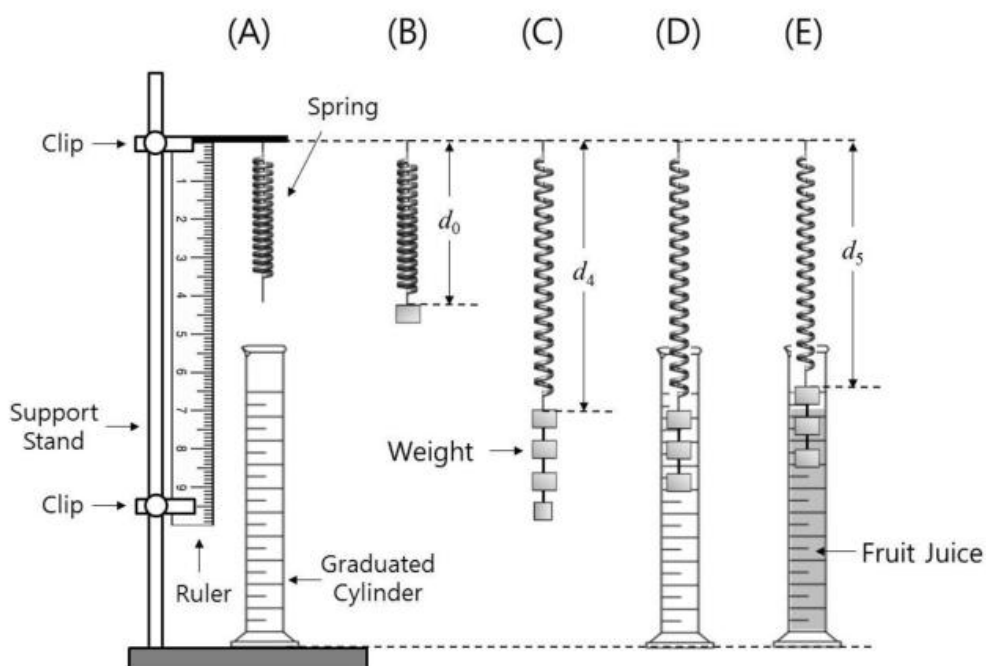


Figure I-3. Experimental set-up for Hooke's law



EXPERIMENTS

3. Experimental Procedure

[In this experiment, the exact masses of all weights are already provided on the envelope of each weight. You should use the given masses for your calculation.]

1. Suspend a spring from a clamp as shown in Figure I-3(A).
2. Hook a 50g weight to the spring. Record the exact value of the mass in column d_0 on **Answer Sheet (I-1-1)**.
3. Record the length of the spring (d_0) as shown in figure I-3(B) with accuracy of one decimal place on **Answer Sheet (I-1-1)**.
4. Perform 4 more measurements with the other weights, increasing the total weight on the spring by adding more weights. For each combination (columns d_1 to d_4), record the exact mass and measure the length of the spring and write them on **Answer Sheet (I-1-1)**. The accuracy for length measurement should be to one decimal place.
5. Remove all weights from the spring.
6. Pour about 70 mL of water into the graduated cylinder and record the volume on **Answer Sheet (I-2-1)**.
7. Lower the spring and the 50g + 50g + 50g weights such that only the two bottom weights are fully immersed into the water and record the volume on **Answer Sheet (I-2-1)**.
8. Lower the spring and the chain further so that all three weights are fully immersed into the water and record the volume on **Answer Sheet (I-2-1)**. You may have to pull the spring down or raise the cylinder to ensure all three weights are immersed.
9. Remove the water and clean the cylinder and weights.
10. Wipe off the water on the weights using Kimwipes.
11. Hang the spring and the chain of 50g + 50g + 50g weights into the graduated cylinder. Record the length of the spring on **Answer Sheet (I-2-2)**. Gently pour in the apple juice until only the two bottom weights are fully immersed into the juice (you might have to raise the cylinder).
12. Record the length of the spring with accuracy of one decimal place on **Answer Sheet (I-2-2)**.
13. Gently pour more apple juice into the graduated cylinder until all three weights are fully immersed into the juice (you might have to raise the cylinder).
14. Record the length of the spring with accuracy of one decimal place on **Answer Sheet (I-2-2)**.
15. Rinse off the juice with water and repeat steps 10 through 14 for the mandarin juice.
16. Answer the following questions using your results.

**EXPERIMENTS**

4. Questions [14 Points]**I-1. [6.0 points]**

I-1-1. [1.25 points] Procedure 1 through 5

I-1-2. [2.5 points] Plot the lengths of the spring (y) with the corresponding values of masses (x). Draw the best fitted line on your plot on **Answer Sheet (I-1-2)**.

I-1-3. [1.25 points] Determine the slope and intercept from the graph and write them down on **Answer Sheet (I-1-3)**.

I-1-4. [1.0 point] Calculate the spring constant in N/m on **Answer Sheet (I-1-4)** (Assume that the gravitational acceleration is 9.81 m/s^2)

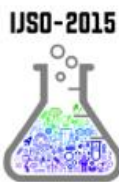
I-2. [6.0 points]

I-2-1. [2.0 points] Fill in the table on **Answer sheet (I-2-1)** for the measurements of the procedures 7 and 8. Calculate the volumes of two 50g weights and three 50g weights.

I-2-2. [2.0 points] Calculate the difference in the lengths of the spring with weights in the apple juice and mandarin juice, respectively, from procedures 11, 12, 13, 14 and 15 on **Answer sheet (I-2-2)**.

I-2-3. [2.0 points] Calculate the buoyant forces exerted by both juices (respectively) on the different weights on **Answer sheet (I-2-3)**.

I-3. [2.0 points] Calculate the average densities of the apple juice and mandarin juice, respectively on **Answer sheet (I-3)**.



EXPERIMENTS

Experiment II. Determination of the Citric Acid Contents in Fruit Juices

1. Background

[Citric Acid]

Citric acid, present in citrus fruits, is a weak organic acid with the formula $C_6H_8O_7$. (Figure II-1) It is also used to add a sour taste to foods and drinks. Citric acid, together with small amounts of malic and tartaric acid, gives citrus fruits their tartness and unique taste. The levels of the acid in citrus fruits are at the highest early in the season and then decrease as the fruits mature.

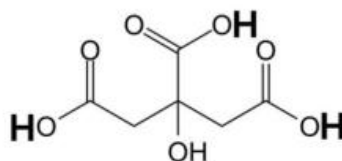


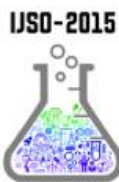
Figure II-1. Molecular structure of citric acid

[Acid and Base]

Arrhenius proposed that an acid and a base are substances that release protons (H^+) and hydroxide ions (OH^-), respectively, when they are dissolved in water. Though there are more general definitions of acid and base, Arrhenius' acid-base concept is still useful for analyzing many acid-base reactions in aqueous solutions.

When dissolved in water, citric acid becomes a triprotic acid capable of releasing maximum 3 H^+ ions (marked by the bolded **H** in figure II-1). If a strong base, such as sodium hydroxide ($NaOH$), is added to an aqueous solution containing the acid, each of the protons from the acid react with one OH^- from $NaOH$ to form water (H_2O), and the sodium ion (Na^+) remaining from $NaOH$ takes the place of each proton of the acid to form a dissolved salt. This type of acid-base reaction is called a neutralization reaction.





EXPERIMENTS

[Acid-Base Titration]

By using the neutralization reaction, we can determine the concentration of an acid or a base. The method is called *titration*. A titration involves delivery (from a burette) of a measured volume of a solution of known concentration (the *titrant*) into a solution containing the substance being analyzed (the *analyte*). The point in the titration where enough titrant has been added to react exactly with the analyte is called **equivalence point**. This point is often marked by an **indicator**, a substance added at the beginning of the titration that changes color at (or very near) the equivalence point. The point where the indicator actually changes color is called **endpoint**.

In this experiment, you will use a NaOH solution as a titrant to determine the concentrations of citric acid (analyte) in fruit juice. Phenolphthalein will be used as an indicator. Figure II-2 shows the experimental set-up for the titration. You will add the NaOH solution into the fruit juices. During early stages of the titration, the color of the juice will remain yellowish. When a pink/purple color starts to develop, add the solution more slowly. At this point you should add one drop at a time until a light pink/purple color persists for at least 30 seconds. This is the endpoint which will be considered as an equivalence point for this experiment.

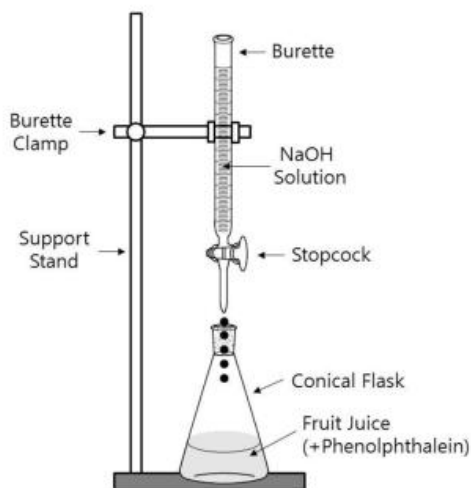


Figure II-2. Experimental set-up for acid-base titration

Since the amount of H^+ released from the citric acid of the fruit juice is exactly the same as that of OH^- in the total volume of the added NaOH solution up to the endpoint, it is possible to determine the concentration of the acid. Recall that molar concentration (mol/L) can be measured in molarity:

$$\text{Molarity (M)} = \frac{\text{Moles of solute (mol)}}{\text{Volume of solution (L)}} \quad (2)$$

You may assume that the only acid present in the fruit juice is citric acid.



EXPERIMENTS

The molarity of OH^- is equal to the molarity of NaOH , due to the fact that when NaOH is added to water it ionizes 100% in a one to one ratio. Therefore, from the molarity of the NaOH solution, you can calculate the number of moles of OH^- by using equation (2). Once the moles of OH^- are known, the moles of citric acid can be determined by using the molar ratio from equation (1) between citric acid and NaOH .

Two fruit juices, mandarin and apple, are prepared for your experiment. You will report the percent concentration of citric acid in each juice. The percent concentration (mass fraction) is expressed as:

$$\text{Percent (\%)} = \frac{\text{Mass of citric acid}}{\text{Mass of solution}} \times 100 \quad (3)$$

2. Materials

Equipment	Chemicals
50 mL burette	0.100 M NaOH solution
Support stand and burette clamp	1% Phenolphthalein indicator
10 mL pipette and pipette filler	Distilled water
100 mL conical flask	Fresh juice (mandarin and apple)
1L bucket (for waste)	
Funnel	
Dropper	



Pipette



Pipette Filler



Funnel



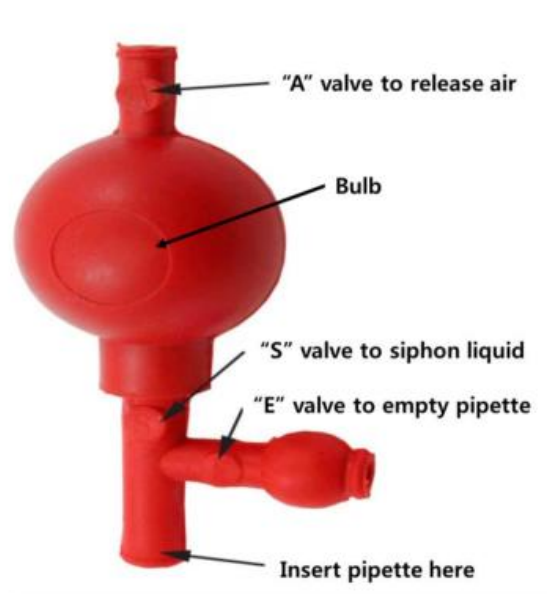
Dropper



EXPERIMENTS

Pipette filler instruction

1. Carefully secure the bottom of the pipette filler to the top of the pipette (without forcing) while holding the pipette near its top.
2. Release air from the pipette filler by squeezing valve "A" on the top of the pipette filler while simultaneously squeezing the bulb. Release more air for larger volume pipettes.
3. Put the tip of the pipette into the liquid to be measured.
4. Draw liquid up into the pipette to the desired level by squeezing valve "S" on the bottom of the pipette filler. This uses the vacuum created in the bulb to draw liquid up into the pipette. Be careful not to draw liquid up into the pipette filler.



5. Empty the pipette by squeezing valve "E" on the side-tube. This allows you to release liquid at the desired rate and to the desired level.
6. It works best to fill the pipette past the zero mark in step 4 (valve "S") and then release some fluid until it reaches the level down to the zero mark in step 5 (valve "E"). Once the pipette is filled to the desired level, the contents can be dispensed using valve "E".



EXPERIMENTS

3. Experimental Procedure

→ **Before starting with experiment, read the instructions for the pipette filler carefully and if necessary, make yourself familiar with it's use by practicing with water.**

1. Shake the bottle of juice. Pipette 10 mL of mandarin juice into a clean conical flask.
2. Clean the pipette immediately with distilled water.
3. Add approximately 10 mL of distilled water into the conical flask containing the juice.
4. Add six drops of phenolphthalein indicator to the flask.
5. Mix the solution carefully by swirling it around.
6. Fill the burette with the 0.100 M NaOH solution using a funnel.
7. Open the burette stopcock and allow a trickle of the NaOH solution to run into a waste bucket. This is to ensure no air is in the burette prior to titration.
8. Record the initial volume of NaOH solution with accuracy of two decimal places in the burette on **Answer Sheet (II-1)**.
9. Place the conical flask under the burette and slowly add the NaOH solution to the flask.
10. When color change starts to develop, add the NaOH solution more slowly. Titrate with the sodium hydroxide solution until the end point is achieved. (Color change persists for at least 30 seconds.)
11. Record the final volume of NaOH solution of the burette with accuracy of two decimal places on **Answer Sheet (II-1)**.
12. Clean the flask with distilled water.
13. Repeat steps 1 – 12 with mandarin juice three more times.
14. Repeat steps 1 – 12 with the apple juice four times.
15. Answer the questions using your results.

**EXPERIMENTS**

4. Questions [13 Points]

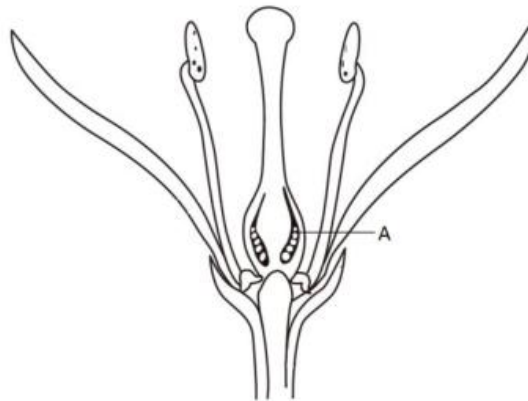
- II-1. [7.0 points]** Calculate the volume (in mL) of the NaOH solution consumed for each titration and the average volume for titrating the mandarin and apple juices.
- II-2. [2.0 points]** Calculate the average number of moles of NaOH to complete the titration of citric acids in mandarin and apple juices.
- II-3. [2.0 points]** Calculate the number of moles and masses (in grams) of citric acid in 10 mL of the mandarin and apple juices. (The atomic masses of C, H, and O are 12.0, 1.00, and 16.0 g/mol, respectively.)
- II-4. [2.0 points]** Calculate the percent concentrations of citric acid in the mandarin and apple juices. In the calculations, assume the density of each juice is 1.00 g/cm³.



EXPERIMENTS

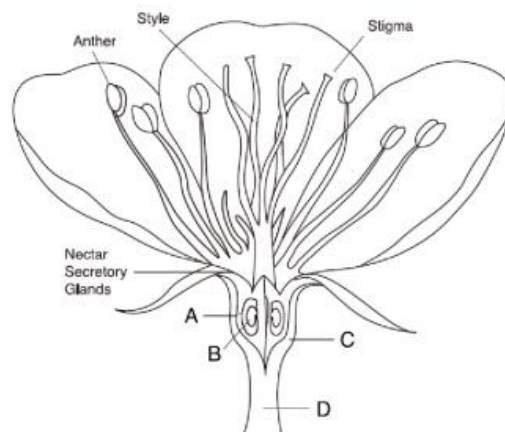
Experiment III. Anatomy and classification of fruits and seeds

III-1. [1.0 point] The figure below shows a diagrammatic portrayal of open lemon flower.



Make a cross section by cutting through the middle of the lemon horizontally. **Draw** the section. **Label** the location of the structure(s) originated from A in the diagram.

III-2. [2.5 points] The figure shows a diagrammatic portrayal of an open apple flower.



Make a longitudinal section of the apple by cutting the apple lengthwise through its centre. **Draw** the section. **Label** the locations of the tissues originating from A, B, C and D in the diagram.



EXPERIMENTS

III-3. Angiosperms are known as the flowering plants. They are characterized by flowers, endosperm within the seeds, and the production of fruits that contain the seeds. A typical fruit has an outer wall called the pericarp that is composed of the exocarp, mesocarp, and endocarp. For example, if you cut an apple in half longitudinally, the skin is the exocarp, the fleshy portion is the mesocarp and the papery part is the endocarp. Inside the endocarp is the seed. Fruits can be classified by using the following incomplete classification key:

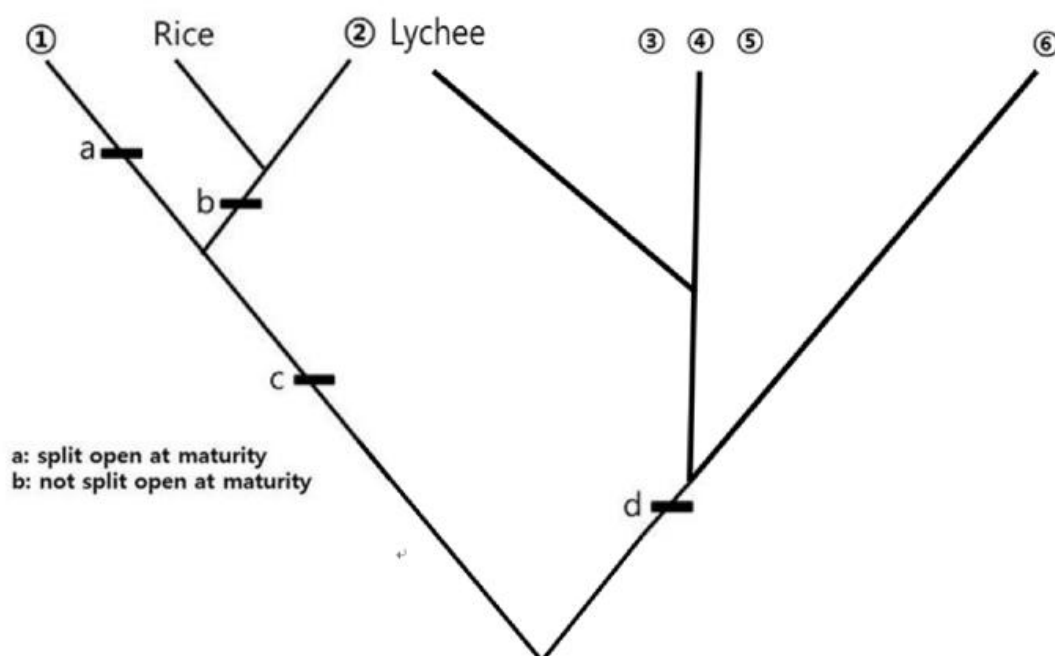


Figure III-1. Classification key for eight fruits

III-3-1. [2.0 points] Select a letter of the alphabet (A) to (H) from Box 1 that best represents fruit ① in Figure III-1. Do the same for fruit ②.

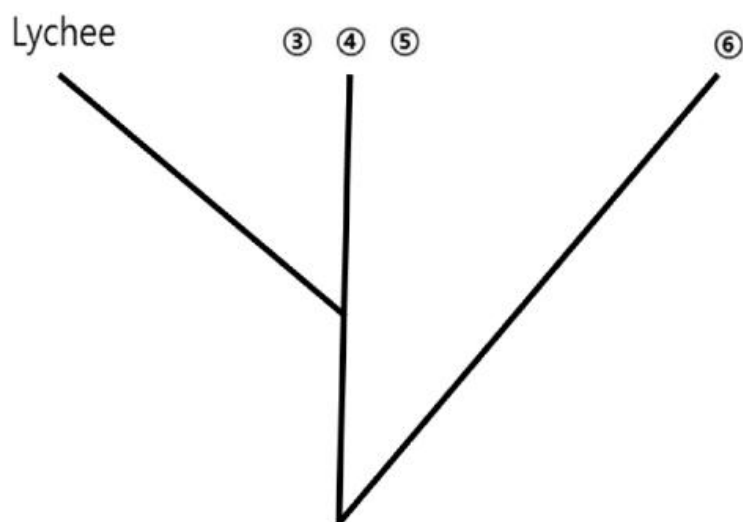
[Box 1]

- | | | | | |
|---------------|-----------|----------------|------------|-----------|
| (A) Acorn | (B) Apple | (C) Bean pod | (D) Lychee | (E) Lemon |
| (F) Persimmon | (G) Rice | (H) Strawberry | | |



EXPERIMENTS

III-3-4. [1.5 points] Identify which fruits from Box 1 most appropriately are represented by ③, ④, ⑤ and ⑥.



Part of Figure III-1

Number	Alphabet in Box 1
③	
④	
⑤	
⑥	



ANSWER SHEET

Country			
	Student 1	Student 2	Student 3
Name			
Code			
Signature			

Experiment I. Determination of the Densities of Fruit Juices						
Questions (Points)	Data and Answers					
I-1-1 (1.25)		d_0	d_1	d_2	d_3	d_4
	Masses (g)					
	Lengths of spring (cm)					
I-1 (6.0)	I-1-2 (2.5)					
I-1-3 (1.25)	Slope	cm/g	Intercept	cm		

**ANSWER SHEET**

	Student 1	Student 2	Student 3
Name			
Code			

Experiment I. Determination of the Densities of Fruit Juices (Cont'd)			
I-1 (6.0)	I-1-4 (1.0)	(Show your working)	
		Spring Constant	N/m
I-2 (6.0)	I-2-1 (2.0)	Immersed weights	50g + 50g
		Volume of water without weights in it (cm ³)	
		Volume read from scale after immersing weights (cm ³)	
		Volume difference (cm ³) (= Volume of liquid displaced)	



ANSWER SHEET

	Student 1	Student 2	Student 3
Name			
Code			

Experiment I. Determination of the Densities of Fruit Juices (Cont'd)						
Questions (Points)	Data and Answers					
I-2 (6.0)	I-2-2 (2.0)	Juice	Apple		Mandarin	
		Lengths of spring with the weights outside juice (cm)				
		Immersed weights	50g + 50g	50g + 50g + 50g	50g + 50g	50g + 50g + 50g
		Length of spring with the weights after immersing (cm)				
	Length difference (cm)					
I-2-3 (2.0)	Buoyant force (N)					
I-3 (2.0)	Density (g/cm ³)					
	Average density (g/cm ³)					

----- DO NOT WRITE BELOW -----

Total points for experiment I	
-------------------------------	--



ANSWER SHEET

	Student 1	Student 2	Student 3
Name			
Code			

Experiment II. Determination of the Citric Acid Contents in Fruit Juices								
Questions (Points)	Data and Answers							
II-1 (7.0)	Show your calculation of the average titer (for both juices)							
	Juices							
	Mandarin				Apple			
Trials	1	2	3	4	5	6	7	8
Initial Readings (in)								
Final Readings (in)								
Volumes of NaOH solution consumed for titration	Average volume				Average volume			

**ANSWER SHEET**

	Student 1	Student 2	Student 3
Name			
Code			

Experiment II. Determination of the Citric Acid Contents in Fruit Juices (Cont'd)				
Questions (Points)	Data and Answers			
II-2 (2.0)	(Show your working)			
	Moles of NaOH	Mandarin		Apple

**ANSWER SHEET**

	Student 1	Student 2	Student 3
Name			
Code			

**Experiment II. Determination of the Citric Acid Contents in Fruit Juices
(Cont'd)**

Questions (Points)	Data and Answers			
II-3 (2.0)	(Show your working)			
	Moles of citric acid	Mandarin		Apple
	Masses of citric acid	Mandarin		Apple



ANSWER SHEET

	Student 1	Student 2	Student 3
Name			
Code			

Experiment II. Determination of the Citric Acid Contents in Fruit Juices (Cont'd)					
Questions (Points)	Data and Answers				
II-4 (2.0)	(Show your working)				
	Percent concentration of citric acid	Mandarin	%	Apple	%

----- DO NOT WRITE BELOW -----

Total points for experiment II	
--------------------------------	--



ANSWER SHEET

	Student 1	Student 2	Student 3
Name			
Code			

Experiment III. Anatomy and classification of fruits and seeds		
Question (Points)	Data and Answers	
III-1 (1.0)	Location of the structure(s) originated from A	
III-2 (2.5)	Location of the tissues originated from A, B, C and D	



ANSWER SHEET

	Student 1	Student 2	Student 3
Name			
Code			

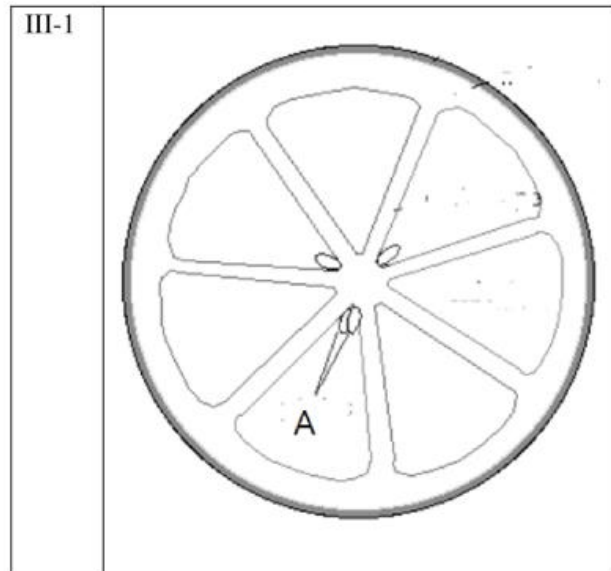
III-3-4 (1.5)		
	Number	Alphabet in Box 1
	③	
	④	
	⑤	
	⑥	

----- DO NOT WRITE BELOW -----

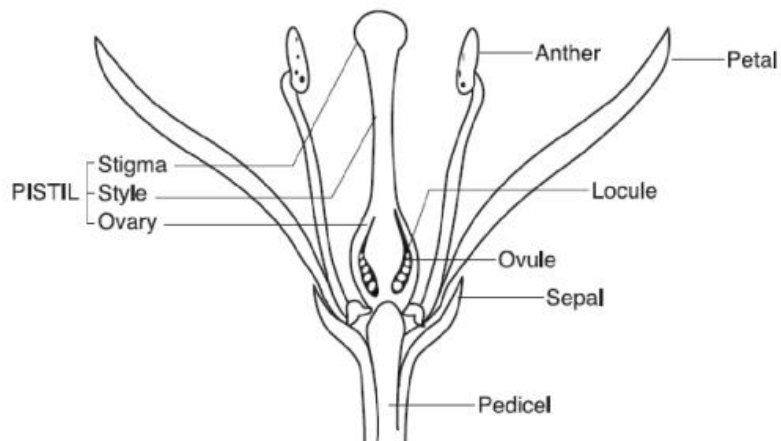
Total points for experiment III	
---------------------------------	--

Experiment III. Anatomy and classification of fruits and seeds

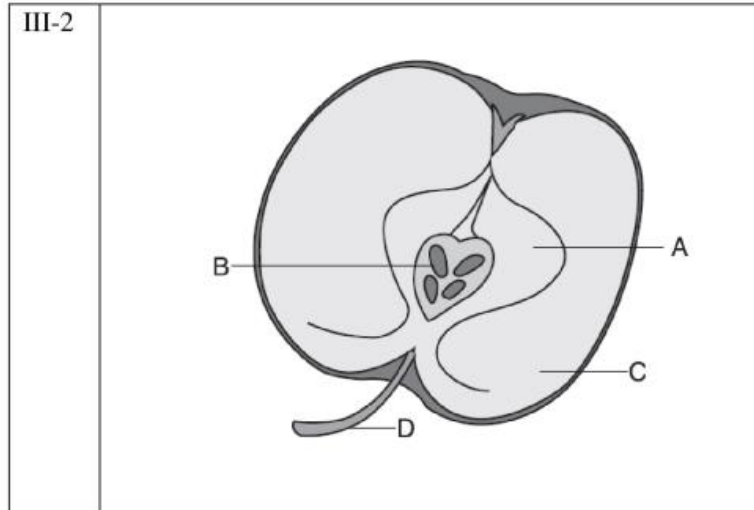
III-1. [1.0 point](Answer): 0.5 points for correct drawing (separate sections and seeds) and 0.5 points for correct labeling.



(Explanation) A is ovules which become seeds.

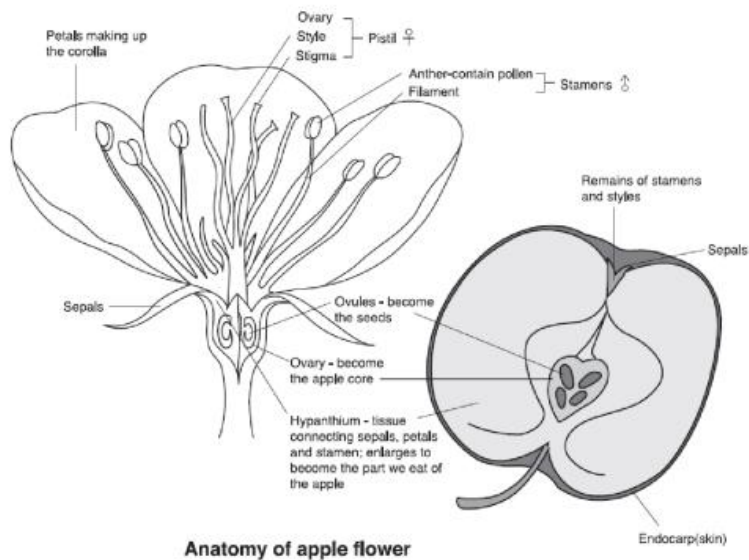


III-2. [2.5 point](Answer) = 4 x 0.5 points for correct labeling and 0.5 points for correct drawing (Seeds, stem and inner and outer fleshy tissue).



(Explanation)

A is originated from ovary, B from ovules, C from hypanthium, and D from pedicel.



III-3-1. [2.0 points] (Answer) = **2 x 1 point**

①	②
C	A

III-3-2. [2.0 point] (Answer) = **2 x 1 point**

c	d
III-b	III-a

III-3-3. [4.0 points] (Answer)

0.5 points per correct fruit (column)

0.25 points for only one mistake per column.

Fruit Classification	A Acorn	B Apple	C Bean pod	D Lychee	E Lemon	F Persimmon	G Rice	H Strawberry
Single seed fruit	√			√			√	
Many seeded fruit		√	√		√	√		√
Aggregate fruit								√
Multiple fruit								
True fruit	√		√	√	√	√	√	
Accessory fruit		√						√
Fleshy fruit		√		√	√	√		√
Dry fruit	√		√				√	

III-3-4. [1.5 points] Identify which fruits from box 1 most appropriately are represented by 3, 4, 5 and 6.

		Points
3	B, E, F in any order	0.25 per correct fruit
4		
5		
6	H	0.75



ANSWER SHEET

Country			
	Student 1	Student 2	Student 3
Name			
Code			
Signature			

Experiment I. Determination of the Densities of Fruit Juices

Questions (Points)	Data and Answers				
I-1 (1.0)	Length of spring (cm)				
I-2-1 (1.0)	Masses (g)	0			
	Lengths of spring (cm)				
I-2-2 (1.0)	Extended lengths of spring (cm)	0			
I-2 (6.0)	I-2-3 (2.0)				



ANSWER SHEET

	Student 1	Student 2	Student 3
Name			
Code			

Experiment I. Determination of the Densities of Fruit Juices (Cont'd)			
		(Show your working)	
I-2 (6.0)	I-2-3 (2.0)	<x>	<y>
		<x ² >	<xy >
		Slope, <i>A</i>	Intercept, <i>B</i>
		cm/g	cm
	I-2-4 (2.0)	Spring Constant	
			N/m



ANSWER SHEET

	Student 1	Student 2	Student 3
Name			
Code			

Experiment I. Determination of the Densities of Fruit Juices (Cont'd)				
Questions (Points)	Data and Answers			
I-3 (4.0)	I-3-1 (1.0)	Juice	Mandarin	Apple
		Lengths of spring (cm)		
	I-3-2 (1.0)	Extended lengths of spring (cm)		
	I-3-3 (2.0)	(Show your working)		
		Juice	Mandarin	Apple
	Buoyant forces (N)			



ANSWER SHEET

	Student 1	Student 2	Student 3
Name			
Code			

Experiment I. Determination of the Densities of Fruit Juices (Cont'd)			
Questions (Points)	Data and Answers		
I-4 (1.0)	Volume (cm ³)		
I-5 (2.0)	(Show your working)		
	Juice	Mandarin	Apple
	Densities (g/cm ³)		

----- DO NOT WRITE BELOW -----

Total points for experiment I	
-------------------------------	--



ANSWER SHEET

	Student 1	Student 2	Student 3
Name			
Code			

Experiment II. Determination of the Citric Acid Contents in Fruit Juices								
Questions (Points)	Data and Answers							
<p>II-1 (7.0)</p>	<p>(Show your working)</p> <p>0.5 per juice for completing all readings to two decimal places and all appropriate units</p> <p>0.5 per juice for correct calculation of average values (if necessary disregarding anomalous values); 0.25 if anomalous values are included</p> <p>0.5 per juice if at least two titers are no more than 0.1 mL apart</p> <p>-----</p> <p>Marks for accuracy compared to ideal titer</p> <p>≤ ±0.25 mL [2.0] per juice</p> <p>± 0.26 – 0.45 mL [1.5]</p> <p>± 0.46 – 0.65mL [1.0]</p> <p>± 0.66 – 0.85 mL [0.5]</p> <p>±0.85 – 0.99 mL [0.2]</p> <p>≥ 1 mL [0.0]</p>							
	Juices							
	Mandarin				Apple			
Trials	1	2	3	4	5	6	7	8
Initial Readings (in)								
Final Readings (in)								
Volumes of NaOH solution consumed for titration	Average volume				Average volume			



ANSWER SHEET

	Student 1	Student 2	Student 3
Name			
Code			

Experiment II. Determination of the Citric Acid Contents in Fruit Juices (Cont'd)					
Questions (Points)	Data and Answers				
II-2 (2.0)	(Show your working)				
	$n(\text{NaOH}) = V(\text{NaOH}) * c(\text{NaOH})$		[1]		
	Correct values for each juice		[0.5]		
	Moles of NaOH	Mandarin	mol	Apple	mol
II-3 (2.0)	(Show your working)				
	Mole ratio: 3:1				
	Calculation $n(\text{acid}) = n(\text{NaOH}) / 3$		[0.5 per juice]		
Calculation $m(\text{acid}) = n(\text{acid}) * M_r(\text{acid})$		[0.5 per juice]			
0.25 if error in M_r or missing units					
	Moles of citric acid	Mandarin		Apple	



ANSWER SHEET

	Masses of citric acid	Mandarin		Apple	
--	-----------------------	----------	--	-------	--

	Student 1	Student 2	Student 3
Name			
Code			

Experiment II. Determination of the Citric Acid Contents in Fruit Juices (Cont'd)					
Questions (Points)	Data and Answers				
II-4 (2.0)	(Show your working) $\text{Calculation } m(\text{juice}) = \text{density} * \text{volume} = 1.00 \text{ g/cm}^3 * 10.0 \text{ cm}^3 = 10.0 \text{ g}$ [0.5] $\text{Calculation Percent Concentration } m(\text{acid}) / m(\text{juice}) * 100$ [0.75 per juice] Or value based on students' answer of II-3				
	Percent concentration of citric acid	Mandarin	%	Apple	%

----- DO NOT WRITE BELOW -----

Total points for experiment II	
--------------------------------	--

IJSO-2015



12th International Junior Science Olympiad

Daegu, Republic of Korea

December 8, 2015

Experiment Competition

Time : 3 hr 30 min

Points : 40


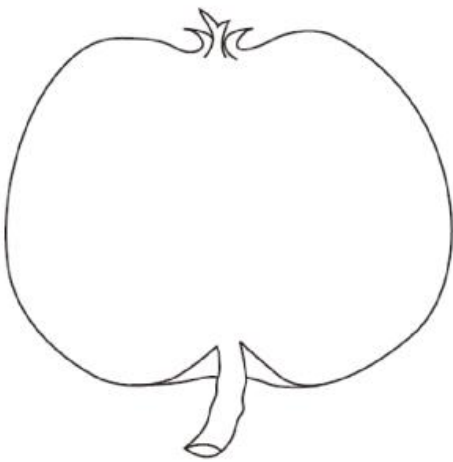
Page 8

ANSWER SHEET



ANSWER SHEET

	Student 1	Student 2	Student 3
Name			
Code			

Experiment III. Anatomy and classification of fruits and seeds		
Question (Points)	Data and Answers	
III-1 (1.0)	Location of tissues originated from A	
III-2 (2.0)	Location of tissues originated from A, B, C and D	

IJSO-2015



12th International Junior Science Olympiad

Daegu, Republic of Korea

December 8, 2015

Experiment Competition

Time : 3 hr 30 min

Points : 40

Page 11

ANSWER SHEET

Partially marking scheme

I-1. [6.0 points]

I-1-1 [1.25 points] 0.25 points for each of the lengths measure.

I-1-2.[2.5 points]

- 0.25 each for drawing axes, writing down quantity and unit → 0.5
- 1.5 if all 5 measurement points are presented in the graph
- 0.5 for drawing the best fitted line

I-1-3. [1.25 points]

- 1.0 for calculating the slope A (within $\pm 10\%$ error)
- 0.5 for calculating the slope A (within $\pm 20\%$ error)
- 0.25 for reading the intercept B

I-1-4. [1.0 point] Calculate the spring constant in N/m. (Assume that the gravitational acceleration is 9.81 m/s^2)

- 0.5 for the formula to get the spring constant
- 0.5 for calculating the value in N/m

I-2. [6.0 points]

I-2-1. [2.0 points]

- 0.25 each for measuring the volume without weights immersed → 0.5
- 0.5 each for measuring the volume with weights immersed → 1.0
- 0.25 each for calculating the differences → 0.5

I-2-2. [2.0 points].

- 0.25 each for measuring the length before emersion → 0.5
- 0.25 each for measuring the length for 2 and 3 weights immersed for apple juice → 0.5
- 0.25 each for measuring the length for 2 and 3 weights immersed for mandarin juice → 0.5
- 0.125 each for calculating the length differences → 0.5

I-2-3. [2.0 point]

- 0.5 each for calculating the buoyant force value in N → 2.0

I-3. [2.0 points] Calculate the average densities of the apple juice and mandarin juice respectively.

- 0.25 each for calculating the density using volumes and buoyant forces → 1.0
- 0.5 each for calculating the average density (if between 0.70 g/cm^3 and 1.30 g/cm^3)