



11th International Junior Science Olympiad

Theory Questions

December 6, 2014



EXAMINATION RULES

1. You have to sit at your designated desk.
2. Before the examination starts, you must check the stationery and any tools (pen, ruler, calculator) provided by the organizers.
3. You are not allowed to bring any tools except personal medicine or approved personal medical equipment.
4. You have to check the Question and Answer Sheets provided. Raise your hand, if you find any missing sheets. Start tasks after the start whistle is blown.
5. During the examination, you are not allowed to leave the examination room except in an emergency. If such is the case, you will be accompanied by a supervisor/volunteer/invigator.
6. You are not to disturb other competitors. If you need any assistance, you may raise your hand and wait for a supervisor to come and assist you.
7. There will be no discussion about the examination tasks or problems. You must stay at your desk until the examination is over, even if you have finished it.
8. At the end of examination time you will hear a whistle blow. You are not to write anything on the Answer Sheets after the stop whistle. You must leave the room quietly when asked to do so. The question and Answer Sheets must be left neatly on your desk.



READ THE FOLLOWING INSTRUCTIONS CAREFULLY

1. The time available is 3 hours and 30 minutes.
2. Check that you have a complete set of test questions and Answer Sheets. The total number of questions is 3 (26 pages).
3. Write down your ID code on each page of your answer sheet.
4. Write your final answer in the smaller box provided. Write the steps clearly in the larger box.

To calculate $4^{-2.5}$, do the following

- 1) Press 4
- 2) Press y^x (just above number 8) key
- 3) Press 2.5
- 4) Press +/- key (next to key 0)

PROBLEM 1

The rapid increase in world population (currently of over 6700 million people) and the methods we have employed to extract, transport, transform, and use our resources are making our planet increasingly smaller and less sustainable for its inhabitants. During the last few years, global environmental changes have gained much importance due to a series of impacts that have been registered. Although the varied chemical, physical, and biological components interacting in our world have always been subject to change, the consequences of human activity have played, in the last century, a fundamental role in determining the nature of these changes.

A team of environmentalists of a non-governmental organization (NGO), and associated with the Ministry of Environment, have set among its goals, to divulge and assess the ecosystemic importance of the genus *Larrea*, (an Argentine plant species) which is widely distributed throughout the country. The NGO identifies its uses as:

1. Implementation in vegetative coverings of lands disturbed by human activity.
2. Social and cultural importance as a native species.
3. Applications in cosmetics and medicine, among others.
4. Use as ground hardener in areas prone to collapses.

The *Larrea* genus, of the Zygophyllaceae family (common local name: "jarilla"), inhabits arid areas. There are four species in Argentina: *Larrea cuneifolia*, *L. divaricata*, *L. nitida* y *L. ameghinoi*. Its leaves are coated by a "resin" composed in its greatest proportion by $C_{18}H_{22}O_4$, nordihydroguaiaretic acid (NDGA). This resin contributes to the prevention of water loss, and presents a level of toxicity for some herbivores.

Theory Questions



Figure 1: Typical landscape in Mendoza. In the forefront, a bloomed jarilla shrub (*Larrea sp.*).

1.1. In order to justify the use of *Larrea* as a native species for the revegetation of disturbed areas, a group of researchers worked in an area affected by mining activity. They proceeded as follows:

Two sample sites were chosen within the affected region. One of them was revegetated with *Larrea*, while the other one was left to natural succession. Ten years later, the two sites were sampled.

Since *Larrea* species modify the conditions under their coverage, favoring the colonization of other species; the goal of this test was to determine if the diversity of species observed in the community reflected this favored tendency for colonization.

Species diversity is an emergent property of biological communities, and can be measured by:

1. Species richness (S): number of different species in the community.
2. Species evenness or equitability: proportion of all individuals belonging to each species (relative abundance).

Theory Questions

The Pielou index (J) is one of the indexes used to measure evenness and it is given by this equation:

$$J = \frac{H}{H_{\max}}$$

Being:

H' the Shannon- Wiener index (values are shown in table 1 and 2 on the next page)

$$H'_{\max} = \ln(S)$$

S : species richness

Remember that:

1. Shannon- Wiener index is one of the indexes to measure biodiversity.
2. Species abundance: total number of individuals of a given species.

Theory Questions

The data obtained from each sample is shown in the following tables and graphs:

Table 1: Species, Abundance and Forms of Life in the Community revegetated with *Larrea* (Sample site 1)

Species	Abundance	Form of Life
<i>Acantholippia seriphioides</i>	300	shrub
<i>Condalia microphylla</i>	250	shrub
<i>Larrea cuneifolia</i>	400	shrub
<i>Larrea divaricata</i>	250	shrub
<i>Lycium tenuispinosum</i>	250	shrub
<i>Montea aphylla</i>	150	shrub
<i>Senna aphylla</i>	220	shrub
<i>Pyrrhocactus pachacoensis</i>	700	cactus
<i>Aristida mendocina</i>	220	grass
<i>Cottea pappophoroides</i>	210	grass
<i>Erodium cicatarium</i>	750	herbaceous
<i>Fabiana peki</i>	450	herbaceous
<i>Helenium donanum</i>	650	herbaceous
<i>Hoffmannseggia eremophila</i>	500	herbaceous
<i>Prosopis flexuosa</i>	150	tree
Shannon-Wiener Index (H')	2.57	

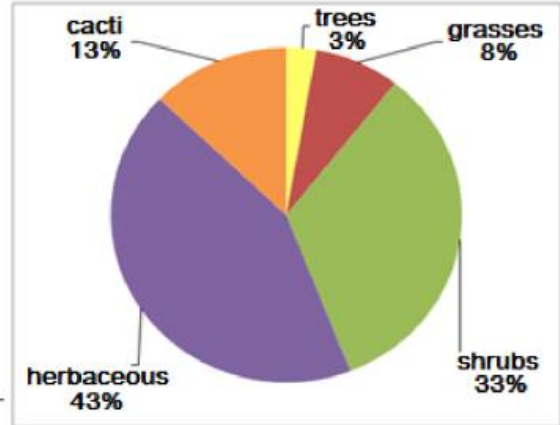


Figure 2: Forms of life percentages.

Table 2: Species, Abundance and Forms of Life in the Community left to natural succession (Sample site2)

Species	Abundance	Forms of Life
<i>Spartium junceum</i>	80	shrub
<i>Larrea cuneifolia</i>	200	shrub
<i>Lycium chilense</i>	70	shrub
<i>Spartium junceum</i>	50	shrub
<i>Aristida mendocina</i>	1000	grass
<i>Cottea pappophoroides</i>	250	grass
<i>Stipa sp.</i>	300	grass
<i>Arjona longifolia</i>	70	herbaceous
<i>Buddleja mendozencis</i>	25	herbaceous
<i>Hysterionica jasionoide</i>	30	herbaceous
<i>Junellia aspera</i>	40	herbaceous
<i>Lecanophora heterophylla</i>	55	herbaceous
<i>Oenotera odorata</i>	20	herbaceous
<i>Salsola kali</i>	25	herbaceous
<i>Cercidium praecox</i>	50	tree
Shannon-Wiener Index (H')	1.95	

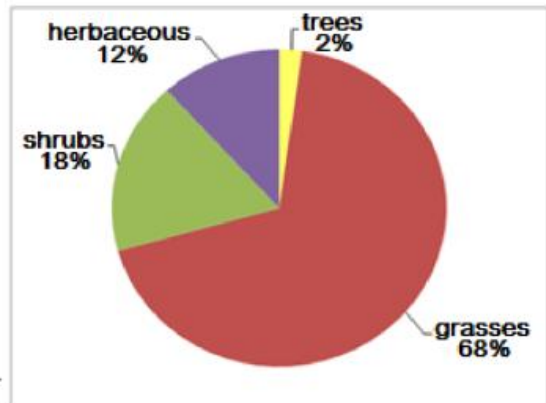


Figure 3: Forms of life percentages.

Theory Questions

1.1.1. Fill in Table 3 in the Answer sheet with the information related to each community.

Community	Species Richness (S)	Total number of individuals (N)	Name of dominant species	Abundance of dominant species	J
Sample 1: Community revegetated with <i>Larrea</i>					
Sample 2: Community left to natural succession					

1.1.2. Indicate which community has a greater biological diversity.

1.1.3. Mark true (T) or false (F) appropriately for each explanation shown on the Answer Sheet, in order to justify the answer given in 1.1.2.

A. After ten years, the community left to natural succession and the community revegetated with <i>Larrea</i> exhibited a wide large difference in species richness, to <i>Larrea</i> spp.'s facilitating effect.	
B. The presence of <i>Larrea</i> in sample 1 increased the abundance of shrubs and herbaceous forms. This could indicate that <i>Larrea</i> favors the development of other species, augmenting the diversity of this community.	
C. The favoring effects are indicating that the revegetated community (sample site1) presents less diversity of forms of life than the community left to natural succession (sample site 2).	

1.2. Once the appropriate species for revegetation has been determined, the NGO is requested to revegetate an arid area located on the foothills of Mendoza. Figure 4 shows the region to be revegetated. Calculate the areas A, B, C, D, and calculate total surface area of the region. Express the final result in square meters.

Theory Questions

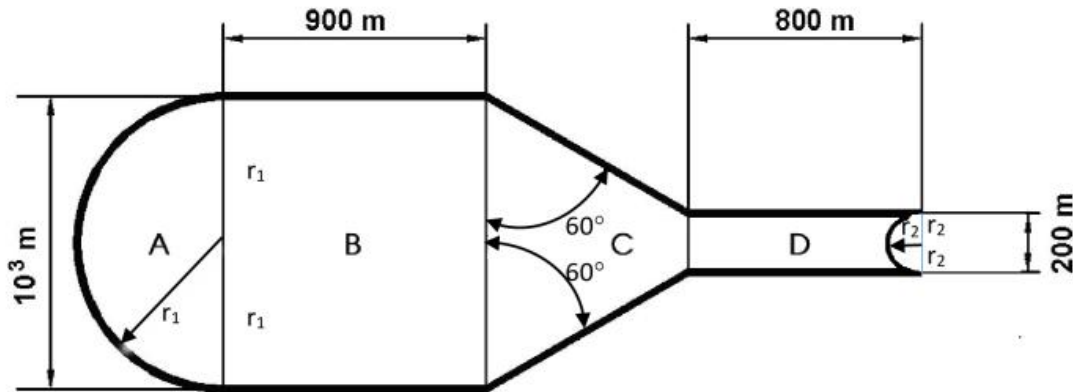


Figure 4: Schematic representation of the region to be revegetated.

1.3. Another difficulty generated by the loss of natural flora, mainly in terrains with a slope, is the detachment and consequent falling of rocks. A side-view of a foothill in Mendoza is shown on Figure 5.

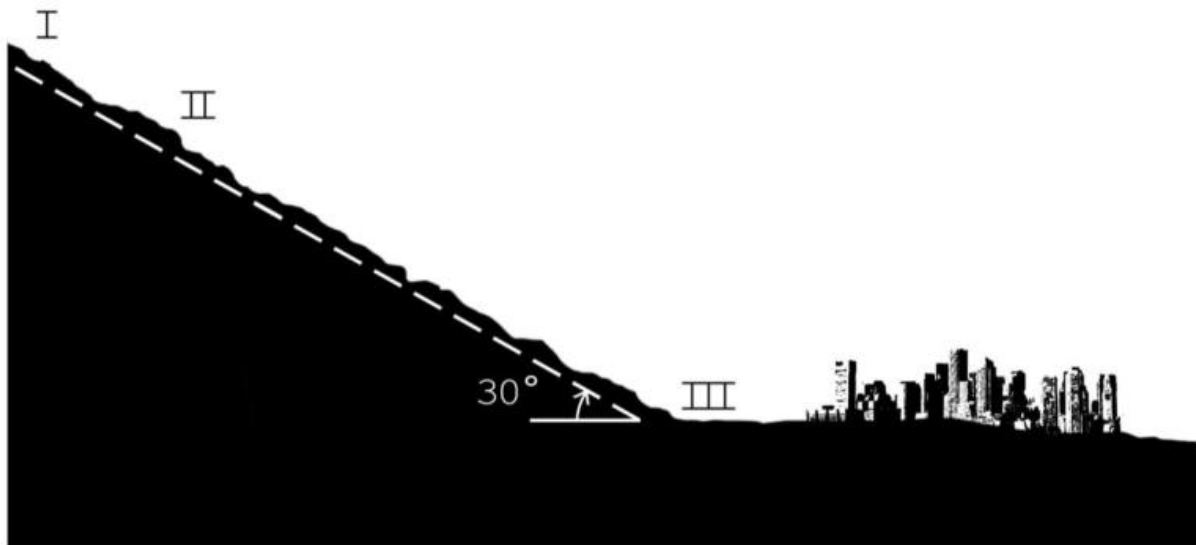


Figure 5: Side-view of the terrain.

1.3.1. While carrying out their revegetation duties, a group of workers located at point I notice a rock sliding (without rotating) down the hillside, with a velocity of 10.0 m s^{-1} . From point I to point II there is a distance of 50.0 m , and the kinetic coefficient of friction between the rock and the ground in that stretch is 0.46 . Neglecting air resistance, and assuming, the surfaces is

Theory Questions

flat, find the velocity of the rock when it passes point II. (Acceleration due to gravity: 9.81 m s^{-2})

1.3.2. The presence of vegetation helps to prevent rock detachment, and to stop the rocks from sliding if they are detached. Suppose the 200.0 m stretch from point II to point III has been revegetated, and that the rock from exercise 1.3.1 reaches point III with zero velocity. Find the kinetic friction coefficient of this stretch, assuming it is constant throughout it.

1.4. In order to improve the condition of the soil, the researchers performed chemical analyses on the disturbed soil and determined the optimum values that *Larrea* spp. need for their development.

The results are shown on Table 4.

Variables	Composition of disturbed soil	Optimum soil composition for <i>Larrea</i>
Organic Matter (% w/w)	0.90	3.33
Total Nitrogen (mg Kg^{-1})	1 033.00	1 353.00
Extractable Phosphorus (mg Kg^{-1})	1.00	8.12
Extractable Potassium (mg Kg^{-1})	1 199.00	1 444.00
Humidity (% w/w)	10.52	12.97
pH	7.54	7.10

Table 4: Composition of the disturbed soil versus optimum soil composition for the development of the *Larrea* species.

Larrea is tolerant to disturbed soils in the desert, but has a low tolerance to soils with high amounts of phosphorus. The disturbed soil must be prepared with fertilizer at a depth of 0.3 m in order for the soil to reach its optimum level of nutrients. The composition of nutrients by mass in the proposed fertilizer is 30% N, 15% P_2O_5 and 15% K_2O .

(Soil density $1.63 \times 10^3 \text{ kg m}^{-3}$; relative atomic mass P: 31; O: 16; K: 39; N: 14)

1.4.1. Determine which nutrient you would choose to use as a reference to determine the

Theory Questions

amount of fertilizer to be used.

1.4.2. Compute how many kilograms of fertilizer must be added per square meters of terrain. Round results using two decimal after the unit.

1.4.3. Determine the concentration of hydroxide ions (OH)¹⁻ responsible for the pH value measured in the disturbed soil shown in Table 4.

1.4.4. Indicate which of the pH indicators shown in Table 5 you would choose to determine qualitatively the disturbed soil pH, and what color the chosen indicator would take. Write the indicator and the color using the code in parentheses)

Indicator	pH interval	Color
Methyl Orange (MO)	3.1 – 4.4	Red (R)-Yellow (Y)
Bromothymol Blue (BB)	6.2 – 7.5	Yellow (Y)-Blue (B)
Methyl Red (MR)	4.2 – 6.2	Red (R)-Yellow (Y)
Metacresol Purple (MP)	7.8 – 9.2	Yellow (Y)-Purple (P)
Phenolphthalein (PP)	8.3 – 10.0	Colorless (C)-Violet (V)

Table 5: Relationship between indicator, pH interval and color.

1.4.5. The pH of the soil can be high in regions of elevated concentrations of soluble Na₂CO₃ salt (sodium carbonate) and poor precipitation. This is due to the hydrolysis reaction between the carbonate ion and H₂O (water).

Write the balanced chemical equation for the total ionization reaction of Na₂CO₃ in water.

1.4.6. Write the balanced ionic hydrolysis equation that justifies the pH elevation in the soil due to the carbonate ion.

1.5. *Larrea* had numerous utilities for native people, including the use of *Larrea cuneifolia* as a compass according to the position of the sun. This plant positions itself so that it captures the morning and afternoon mild sunlight, but avoids the strong sunlight at noon, thus reducing transpiration. Figure 6 shows four illustrations of a *Larrea* leaf, each with a different orientation.

Theory Questions

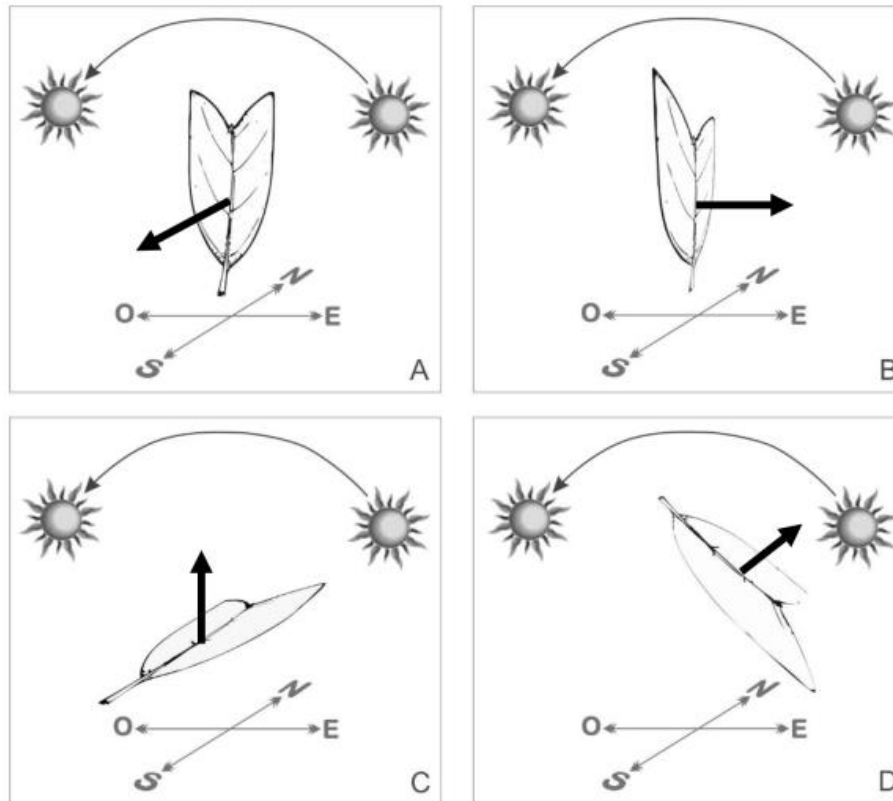


Figure 6: *Larrea cuneifolia* leaves with different orientations. The arrows show the normal direction of the upper surface of the leaf.

1.5.1. Indicate which one illustration best expresses the description given in 1.5.

1.5.2. Select from the following options the statement that provides the reason to the answer to 1.5.1:

- a) The wavelength of the light emitted by the Sun is different at different times during the day
- b) The frequency of the light emitted by the Sun is different at different times during the day
- c) The surface of the leaf exposed perpendicularly to the Sun's radiation at different times during the day
- d) The environment temperature is different at different times during the day

Theory Questions

1.6. The nordihydroguaiaretic acid (NDGA) ($C_{18}H_{22}O_4$), present in the resin of *Larrea* leaves, has many uses in cosmetics and medicinal industries due to its properties as an antioxidant, anticarcinogen and antiviral.

A method to identify this acid is based on its reaction with ammonium molybdate tetrahydrate ($(NH_4)_6Mo_7O_{24} \cdot 4H_2O$) to produce an orange colored complex. The absorbance of an incident ray of light of certain wavelength is measured after it traverses a sample of the colored solution placed in a transparent cuvette as shown in Figure 7. The absorbance will depend directly on the concentration of the colored complex present in the solution, which absorbs radiation at that particular wavelength.

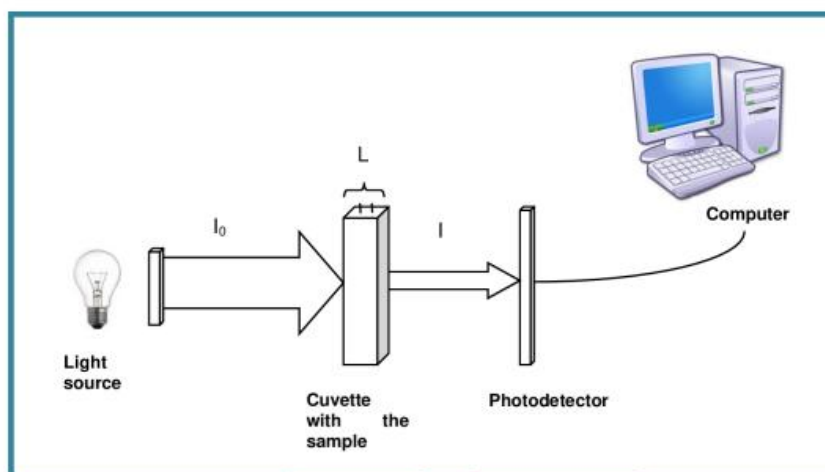


Figure 7: Schematic setup for the measurement of absorbance

In the process of extraction of NDGA from the leaves of *Larrea sp.*, other substances are extracted together with it. These substances interfere with the quantitative determination of NDGA. Since they have some functional groups in common with NDGA, they react with the ammonium molybdate producing the colored complex.

Alcohol extracts were obtained from the leaves of *L. divaricata* and *L. cuneifolia*. Absorbance measurements were performed on them at different wavelengths, using the ammonium molybdate method. The results are shown on Table 6.

Wavelength (nm)	400	450	500	550	600	650
Average absorbance of other substances in the extracts	0.82	0.33	0.15	0.07	0.05	0
NDGA absorbance in <i>L. divaricata</i>	1	0.84	0.53	0.22	0.09	0.03
NDGA absorbance in <i>L. cuneifolia</i>	0.99	0.81	0.46	0.20	0.06	0.04

Table 6: Absorbance of NDGA and other substances in *L. divaricata* and *L. cuneifolia*, and the corresponding wavelengths.

1.6.1. Draw a Cartesian graph of comparative lines for absorbance as a function of wavelength for the three samples, based on Table 6. Use different colors for each type of absorbance line.

1.6.2. Using the information given in Table 6, indicate the wavelength that is needed to best distinguish NDGA from other substances.

A relation between the absorbance and the concentration of the concerned substance, which is given by the following expression:

$$A = C\varepsilon L$$

where A the absorbance of the sample (dimensionless); C the concentration of the substance (M); L the optical travel length (see Figure 7); ε the molar absorptivity coefficient, which depends on the substance being analyzed, the wavelength concerned and experimental conditions ($M^{-1} \text{ cm}^{-1}$).

A chemist obtained two extracts, one from the leaves of *L. divaricata* and another from *L. cuneifolia*, but forgot to label them. He decided to place them in two vessels labeled A and B, and measured the absorbance of each sample at 500 nm using a cuvette of 1 cm optical travel length.

With $\varepsilon = 8\,920 \text{ M}^{-1} \text{ cm}^{-1}$ and the molar mass of NDGA being 302 g mol^{-1} , the absorbance for extract A was 0.47, while the absorbance for sample B was 0.52.

1.6.3. Calculate the NDGA concentration (mg L^{-1}) in each extract. Consider the extract was purified from other substances.

1.6.4. Using the information in Table 6 and the values for each absorbance, indicate the species corresponding to each extract.



Theory Questions

1.6.5. A 500 ml aqueous solution at 0.2% w/v of NDGA is to be prepared from *L. divaricata* leaves. It is known that dry *L. divaricata* leaves contain 7% w/w of NDGA. Determine the mass of fresh *L. divaricata* leaves that you need considering that fresh leaves have a moisture content of 8% w/w (water density at 20°C is 1 g cm^{-3}).

PROBLEM 2

Climate change is understood as a long-term change in the average weather conditions produced by nature and/or human activity. It is currently an environmental issue of major worldwide concern.

Some of the topics related to climate change that are causing concern in the scientific community include:

- a. Acid rain affecting the fresh water reservoirs of the planet, and generating conflicts in the distribution of water to human population.*
- b. Melting glaciers as a direct consequence of a global rise in temperature.*

The increased concentration of certain gases in the atmosphere, such as the so-called Greenhouse Gases (GG) among which we find carbon dioxide (CO₂), methane (CH₄), and nitrogen dioxide (NO₂), is a result of human activity associated with the use of fossil fuels, intensive agriculture, and soil alteration. The accumulation of these gases has produced a rise in the average temperature of the earth's surface known as "Global Warming". Another consequence of the greater concentrations of GG together with sulfur dioxide (SO₂), is the formation of a type of precipitation known as acid rain, which is also naturally produced by volcanic eruptions and thermal springs. The harmful effects of low pH levels in aquatic ecosystems are immediate and it also has other consequences such as the deterioration of construction materials, sculptures and stone monuments. Besides, acid rain dissolves metals such as lead (Pb), and copper (Cu) present in water pipes. Nevertheless, sulfur in acid rain may have benefits. Sulfur dioxide is converted into sulfate aerosols that enhance the reflection of solar radiation and also limits global warming by counteracting the natural production of methane gases by microbes in wetland areas; and thereby tending to cool Earth's surface.

2.1. Normal precipitation has an average pH of approximately 5.65 due to the presence of CO₂ which, together with atmospheric water, forms carbonic acid (H₂CO₃). If the pH value is lower than 5, it is considered acid rain, sometimes reaching a pH as low as 3. The toxic constituents of acid rain are SO₂ and nitrogen monoxide (NO), originated from the combustion of carbon or hydrocarbons. Through a series of chemical reactions, SO₂ and NO turns into sulfur trioxide (SO₃) and nitrogen dioxide (NO₂), respectively combining afterwards with atmospheric water and producing the corresponding acids responsible for a low pH.

Theory Questions

2.1.1. Write the chemical reactions needed to obtain the acids derived from SO₃ and CO₂ when combined with water.

2.1.2. The unbalanced formation reaction of nitric acid in acid rain is:



Write the half-reactions and the balanced equation.

2.2. Unwanted chemical reactions such as the dissolution of the aluminum hydroxide (Al(OH)₃) present in soils, occurring at pH levels lower than 4, are facilitated with severe consequences for fish, amphibians, and insects due to aluminum's toxicity. The water acidity causes serious complications for invertebrates with an exoskeleton composed of calcium carbonate (CaCO₃) in the form of calcite, since it favors the dissolution of this mineral.

The inhabitants of a city located in the Andes detected the disturbance of a lake ecosystem and its near surroundings up to a few kilometers away. The alterations were clearly manifested in the deterioration of the native flora and fauna, where a great number of fish and amphibians were found dead on the lakeside. With the object of determining the cause of the problem, and thus provide a solution, researchers decided to analyze a sample of water. It was found that fish mortality was due to aluminum poisoning.

2.2.1. Determine the solubility in moles per liter of aluminum hydroxide (Al(OH)₃) in the lake water which has a pH of 5.2, Knowing that the K_{ps} (solubility product) value is 5x10⁻³³.

2.3. The water piping network in the above mentioned city is represented in Figure 8, where V₁-V₁₁ are the distribution points, and V₁ the main receptor connected to the water plant.

In the past, water pipes were made of lead. They have been degraded over time and caused cases of intoxication and saturnism (lead poisoning) (in people) due to the presence of this heavy metal in water.

The old water pipes must be replaced by others made of polyvinyl chloride (PVC). In order to avoid the cost of unnecessary connections, the current number of connections must be reduced.

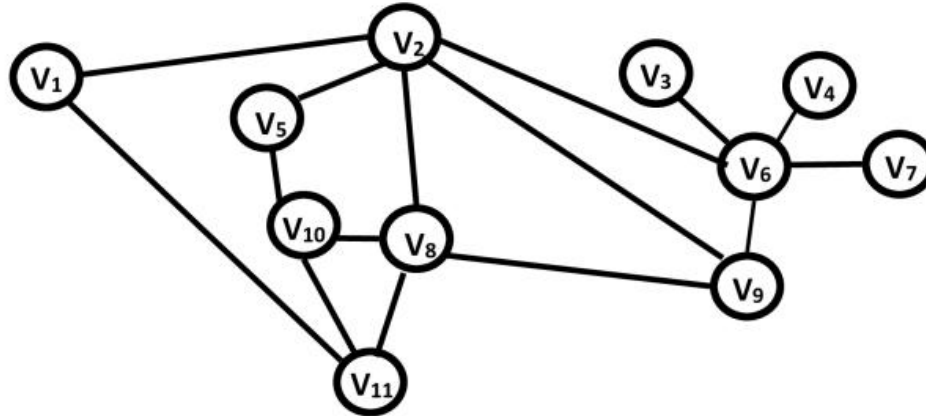


Figure 8: Water piping network

2.3.1. Determine the maximum number of pipes that can be removed without interrupting the water supply in every distribution point.

2.4. Lead accumulates in the body and normally affects the liver, the kidneys, and the nervous system. Its excessive ingestion affects the neurological system, resulting in mental retardation, low average growth heights and disruptions in daily activity. Even low quantities of absorbed lead can result in damages to the central nervous system of small children and fetuses.

The toxic levels of lead in blood for adults range from 0.038 mg/100 ml upward, while in children it starts at 0.005 mg/100 ml. The levels of lead concentration obtained from blood tests of 5 adults (sample 1) and 5 children (sample 2) of the city under discussion are shown on the following table7.

Sample	Blood lead concentration (mg/100 ml)				
1. Adults	0.057	0.020	0.087	0.060	0.065
2. Children	0.004	0.010	0.009	0.008	0.007

Table 7: Blood lead concentration (mg/100 ml) in adults and children.

2.4.1. Compute the average value of lead in blood for each sample. Indicate which of them, if any, is above the toxicity levels, writing an A for adults, a C for children and a B for both

Theory Questions

2.5. Life on Earth is made possible by the energy it receives from the Sun, and by the presence of the Greenhouse Gases, which absorb the infrared radiation emitted by the surface of the Earth. Part of this absorbed radiation is reemitted to the upper parts of the atmosphere, while another part is reemitted to the surface of the Earth increasing its average temperature.

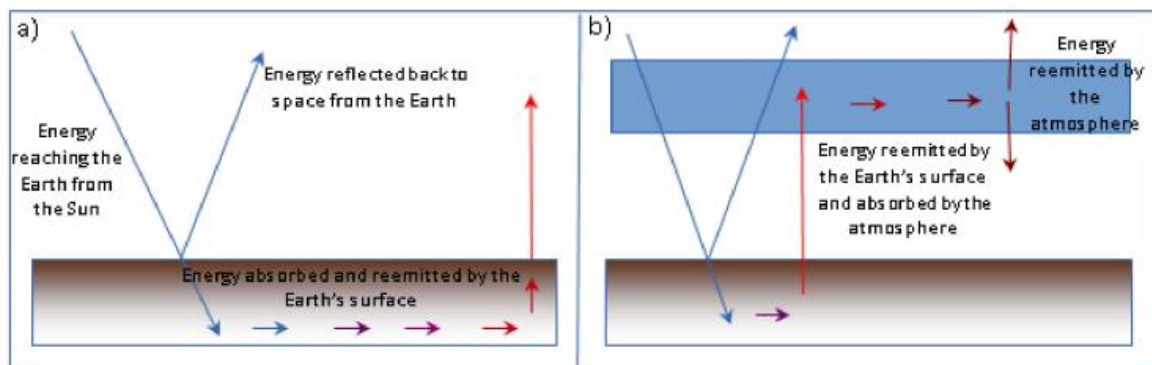


Figure 9. a) without atmosphere. b) with atmosphere

The surface of the Sun radiates energy as a black body at a temperature of 5500°C. A black body is an object that absorbs all the energy of the incident radiation. Part of this energy reaches the top of the Earth's atmosphere with an average incoming intensity of approximately 341 W m^{-2} over the whole surface of the atmosphere. Thirty percent (30%) of this intensity is reflected back to space and the rest is absorbed by the surface of the Earth, which reemits it at larger wavelengths (infrared radiation).

2.5.1. Calculate Earth's equilibrium temperature without the absorption of the atmosphere (Figure 9a). Express your results in K and °C.

The intensity I (W m^{-2}) radiated by a black body follows Stefan-Boltzmann's Law:

$$I = \sigma T^4, \text{ where } \sigma = 5,67 \times 10^{-8} \text{ W m}^{-2} \text{ K}^{-4}$$

Assume that the Earth radiates energy as a black body.

2.5.2. The atmosphere is transparent to most of the high frequency radiation coming from the Sun, but not to low frequency radiation (infrared part of the electromagnetic spectrum), such as that reemitted by the Earth's surface. This is mainly due to the presence of greenhouse gases in the atmosphere.

Theory Questions

Find the equilibrium temperature of the Earth with the atmosphere (Figure 9b), assuming that the atmosphere absorbs all the radiation emitted by the surface, and reemits it back to both the Earth and Space in equal proportions. Start out with intensity balance on the Earth surface and on the atmosphere.

Hint:

Assume that the atmosphere only absorbs energy from the Earth surface, and that both emit energy as a black body.

2.6. One of the theories concerning climate change affirms that the planet is warming due to the Greenhouse Effect, and this in turn is causing the melting of glaciers.



Figure 10: Glacier Perito Moreno, Santa Cruz, Argentina

2.6.1. In this context, calculate the minimum amount of energy needed to completely melt a block of 10 000 kg of ice, initially at -10°C .

Thermodynamic constants:

Specific heat capacity of ice: $c = 2.093 \text{ J g}^{-1} \text{ K}^{-1}$

Latent heat of ice fusion: $l = 333.7 \text{ J g}^{-1}$

PROBLEM 3

Sports physiology studies the responses and adaptations of the human body to physical effort. These responses and adaptations vary depending on multiple factors such as the intensity, duration or frequency of physical activity performed; or others, such as diet, environmental conditions or genetic inheritance of each individual.

A 13 year old teenager enjoys physical activity. For several months, she has been training for an athletic competition. Today she got up early and had breakfast, which consisted of a cup of milk, a slice of toast and a banana.

3.1. Carbohydrate digestion results in the catabolism of the large molecules into simpler molecules. The enzymes contained in the body catalyze this transformation.

3.1.1. Based on the information shown on Table A and Table B, mark with a cross (X) on Table A the secretory structure which produces the enzyme involved in digesting the starch that is present in the slice of toast. Then, use the corresponding number given to the enzyme shown on Table B, to match the Structure where this enzyme is produced.

Hint: the same enzyme may be produced by more than one structure.

Table A		
STRUCTURE	SECRETORY STRUCTURE INVOLVED IN THE DIGESTION OF STARCH	ENZYME
Liver		
Stomach		
Salivary Glands		
Large intestine		
Pancreas		
Esophagus		
Small Intestine		

Table B	
1	Phospholipase
2	Maltase
3	Amylase
4	Lipase
5	Glucosidase
6	Sucrase

3.1.2. At breakfast, she also incorporated carbohydrates from milk and fruit that in the digestive process will be split into simpler sugars due to the activity of specific enzymes.

Theory Questions

Fill in Table C (indicated on the Answer Sheet) which shows enzymatic reactions. Write the corresponding letter of the enzyme in the green box and the corresponding number for the products in the blue boxes (each number may be used more than once).

ENZYMES		PRODUCTS	
A	Creatin kinase	1	Maltose
B	Amylase	2	Glucose
C	Lactase	3	Fructose
D	Glucosidase	4	Lactose
E	Sucrase	5	Galactose
F	Maltase	6	Saccharose (sucrose)

Table C	
starch	<input type="text"/> → <input type="text"/>
maltose	<input type="text"/> → <input type="text"/> + <input type="text"/>
lactose	<input type="text"/> → <input type="text"/> + <input type="text"/>
saccharose (sucrose)	<input type="text"/> → <input type="text"/> + <input type="text"/>

After breakfast, the athlete goes to the sports field for her daily workout routine. If we study in detail the movement of the athlete and the processes involved in the musculature, we can say:

3.2. “Musculature together with the skeletal system it forms the musculoskeletal system, which is responsible for movement of the human body. The mechanism of muscular contraction can be explained by an ordered sequence of processes”.

3.2.1 Table D shows muscular contraction processes. Complete Table E (indicated in Answer Sheet), indicating the letter of the process in the order in which they occur.

Table D: Processes of muscle contraction
A. ATP is hydrolyzed to ADP + Pi (inorganic phosphorus) and the myosin head is separated from the active site.
B. Acetylcholine acts on a local area of the sarcolemma to open multiple membrane protein channels. This allows the entry of large amounts of sodium ions into the sarcolemma, which initiates an action potential in the muscle fiber.

Theory Questions

- | |
|--|
| C. The action potential depolarizes the sarcolemma. The release of Ca ⁺⁺ ions from the sarcoplasmic reticulum occurs. |
| D. Ca ⁺⁺ ions are pumped back into the sarcoplasmic reticulum, where they remain until the arrival of a new action potential to the muscle. |
| E. An action potential reaches the neuromuscular junction (synapse) of a motor neuron and a muscle, acetylcholine is released from the axon terminal. |
| F. Ca ⁺⁺ ions initiate attractive forces between the actin and myosin. Filaments of myosin and actin are arranged next to each other within the sarcomere so that that they can interact in an organized fashion resulting in muscle contraction. During contraction, myosin heads bind actin and pull the filaments in towards the center. |

Tabla E	
ORDER	CORRESPONDING LETTER
1	
2	
3	
4	
5	
6	

3.2.2 Figure 11 represents muscle contraction. Write the letter corresponding to each process in the space provided.

Theory Questions

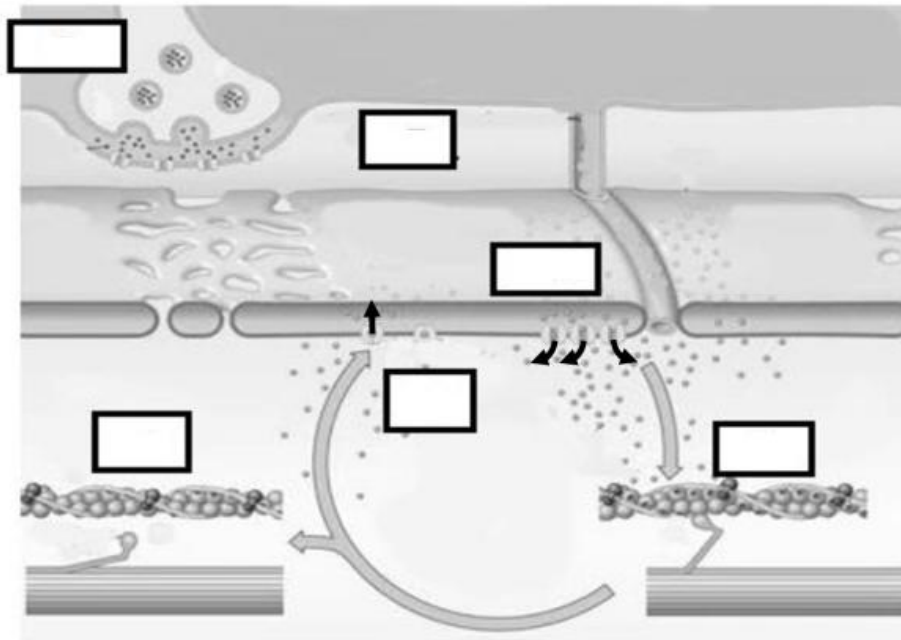


Figure 11: Muscle contraction representation.

The contraction of skeletal muscle, involves multiple simultaneous shortening of sarcomeres. This means that the sliding of actin and myosin filaments occurs, making them work as an engine. For this process to occur, mechanical forces and energy are required. The forces are generated by the filament cross-bridges and the energy comes from the hydrolysis of ATP to ADP + Pi.

3.3 As part of her daily training, the athlete also performs a weight lifting routine in order to strengthen her muscles.

3.3.1. The typical maximum force of an "engine" of myosin-actin as those found in muscles, is 5.0×10^{-12} N. Calculate the minimum amount of "engines" a muscle should utilize in lifting a mass of 50 kg. (Acceleration of gravity: 9.81 m s^{-2})

3.3.2. These engines consume ATP. The typical force exerted by a myosin engine is 5×10^{-12} N, and its typical speed is about $11 \times 10^{-9} \text{ m s}^{-1}$. Calculate the power developed by the myosin engine measured in J s^{-1} .

Theory Questions

3.4. Different foods provide the organism with different amounts of energy to carry out its functions. The combustion equation of glucose ($C_6H_{12}O_6$) is one of those most frequently used to describe this process.

3.4.1. If the food ingested at breakfast by the athlete is equivalent to 90 g of glucose, calculate the mass of carbon dioxide (CO_2) produced as a result of complete combustion. (Relative atomic mass C= 12; O=16; H=1).

3.4.2. Calculate the number of oxygen atoms in 90 g of glucose molecules.

3.5. Then the athlete decides to do a short speed test in a straight line first and then in a circular movement.

3.5.1. During her straight line path, her velocity follows the graph as shown in the figure below. Find the instantaneous acceleration at points A, B and C.

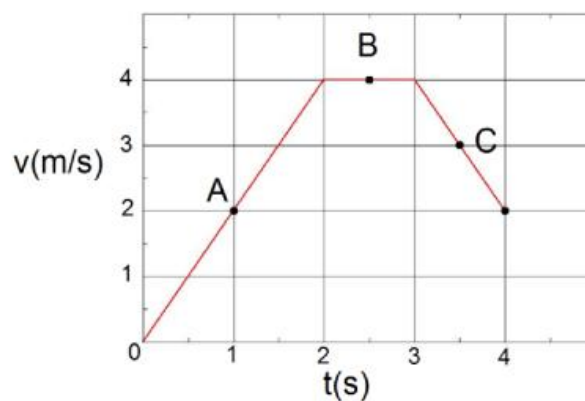


Figure 12: Velocity as a function of time

3.5.2. Calculate the distance she runs in the first two seconds the race.

Theory Questions

3.5.3. The circular path starts at $t = 4$ s, with the speed shown in Figure 12. The limiting force friction between the footwear and the ground of the athlete does not allow her to have more than 3.0 m s^{-2} centripetal acceleration. Calculate the minimum radius of her circular path. Consider a constant speed along the whole path.

3.6. Before starting with her physical activity, the athlete underwent a medical checkup. The pressure and volume for different parts of the heart in relation with time, as well as an electrocardiogram and phonocardiogram are illustrated in Figure 13.

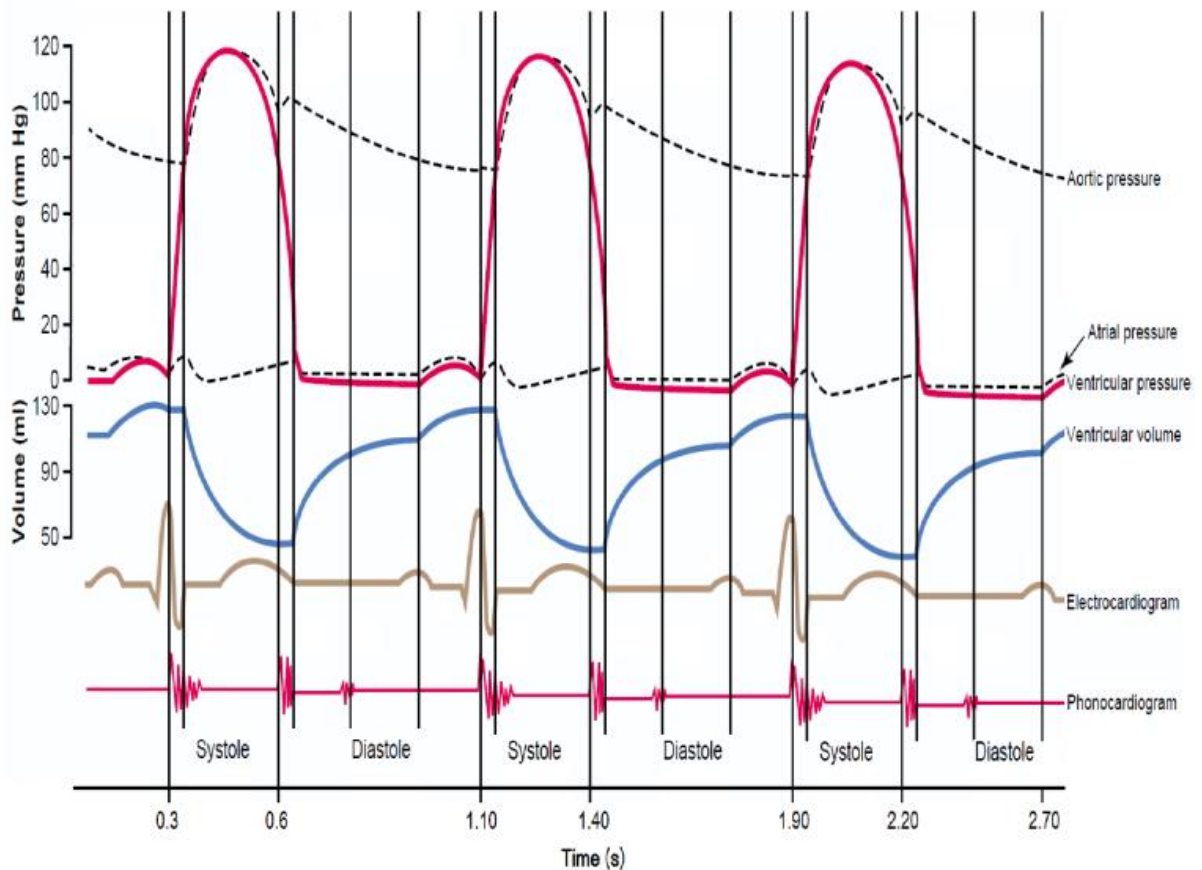


Figure 13: Various events occurring during three cardiac cycles, for different parts of the heart

Theory Questions

3.6.1. Using the information shown in the graph, compute the time period of one cardiac cycle (in seconds).

3.6.2. Calculate the corresponding heart rate (cardiac cycles per minute).

3.6.3. Indicate in which time intervals ventricular volume decreases considering that intervals in which the volume remains constant last 0.05 seconds.

3.6.4. Indicate the maximum value observed for ventricular pressure.

3.7. After physical activity the athlete felt excessively agitated, so she decided to ask someone to take her pulse. At that time no one had a watch, but a Physics student said that he could do it by improvising a simple pendulum and making it oscillate slightly around its equilibrium position (Figure 14). Every 15 complete cycles of the pendulum, the student measured 20 beats and found that the heart frequency of the athlete was twice the one recorded in the previous exercises (frequency calculated in point 3.6.2).

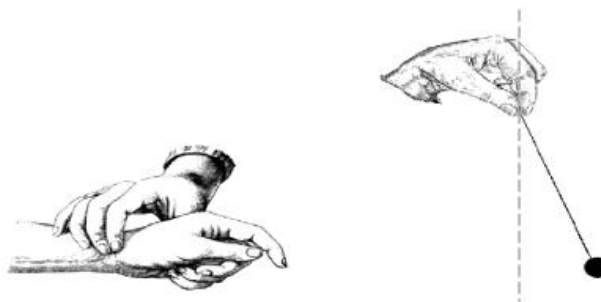


Figure 14: Pulse measurement using a simple pendulum.

3.7.1. Calculate the length of the pendulum used by the student, the period of simple pendulum is given by $T = 2\pi \sqrt{\frac{L}{g}}$

Being:

L the length of the pendulum

$g = 9.81 \text{ m/s}^2$



Answer sheet

11th International Junior Science Olympiad,
Mendoza, Argentina

Time : 3 hs 30 min
Marks : 30



11th International Junior Science Olympiad

Theoretical Competition

December 6, 2014

(Answer Sheet)



Answer sheet

11th International Junior Science Olympiad,
Mendoza, Argentina

Time : 3 hs 30 min
Marks : 30

FILL IN THE FOLLOWING INFORMATION

FIRST NAME	
LAST NAME	
COUNTRY	
CODE	
SIGNATURE	

PROBLEM 1

1.1.1. Fill in Table 3 in the Answer sheet with the information related to each community.

Community	Species Richness (S)	Total number of individuals (N)	Name of dominant species	Abundance of dominant species	J
Sample 1: Community revegetated with <i>Larrea</i>					
Sample 2: Community left to natural succession					

Table Nº 3

1.1.2. Indicate which community has a greater biological diversity.

Answer:

1.1.3 Mark true (T) or false (F) appropriately for each explanation shown on the answer sheet, in order to justify the answer given in 1.1.2.

A. After ten years, the community revegetated with jarilla and the community left to natural succession have a wide difference in species richness, related to <i>Larrea spp.</i> 's facilitating effect.	
B. The presence of <i>Larrea</i> in sample 1 increased the abundance of shrubs and herbaceous forms. This could indicate that <i>Larrea</i> favors the settling of other species, augmenting the evenness of this community.	
C. The favoring effects are indicating that the revegetated community (sample 1) presents less distribution of forms of life than the community left to natural succession.	

1.2. Calculate the areas A, B, C, D, and calculate total surface area of the region. Express the final result in square meters.

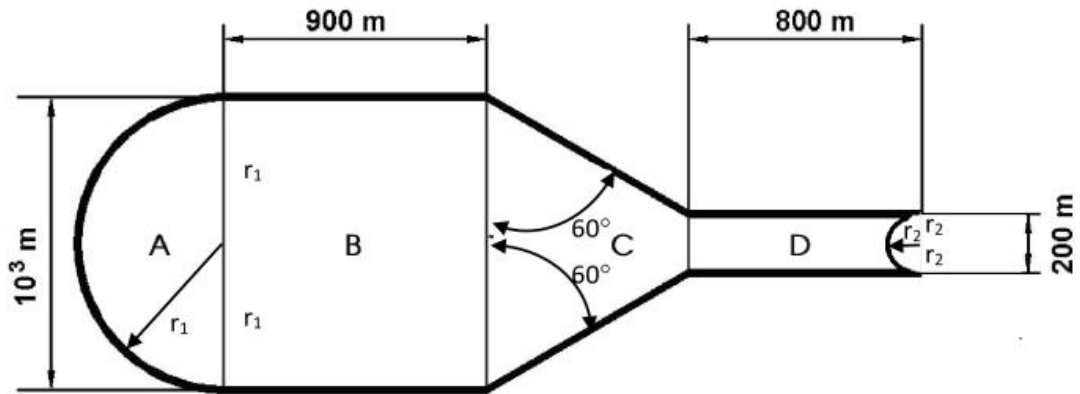


Figure N° 4: Schematic representation of the region to be revegetated.

RESOLUTION:

ANSWER: Total Area=

1.3.1. Find the velocity of the rock when it passes by point II.

RESOLUTION:

ANSWER: $V_{II} =$

1.3.2. Find the kinetic friction coefficient of this stretch, assuming it is constant throughout it.

RESOLUTION:



Answer sheet

ANSWER: $\mu =$

1.4.1. Determine which nutrient you would choose as a guide for establishing the amount of fertilizer to be used.

ANSWER:

1.4.2 Compute how many kilograms of fertilizer must be added per square meter of terrain. Round results using two decimal after the unit.



RESOLUTION:

ANSWER:

1.4.3. Determine the concentration of hydroxide ions (OH)¹⁻ responsible for the pH value measured in the disturbed soil shown in Table 4.

RESOLUTION:

ANSWER:

1.4.4. Indicate which of the pH indicators shown in Table 5 you would choose to determine qualitatively the disturbed soil pH, and what color the chosen indicator would take. Write the indicator and the color using the code in parentheses)

RESOLUTION:

Indicator:

Color:

ANSWER:

1.4.5. Write the balanced chemical equation for the total ionization reaction of Na_2CO_3 in water.

ANSWER:

1.4.6. Write the balanced ionic hydrolysis equation that justifies the pH elevation in the soil due to the carbonate ion.

ANSWER:

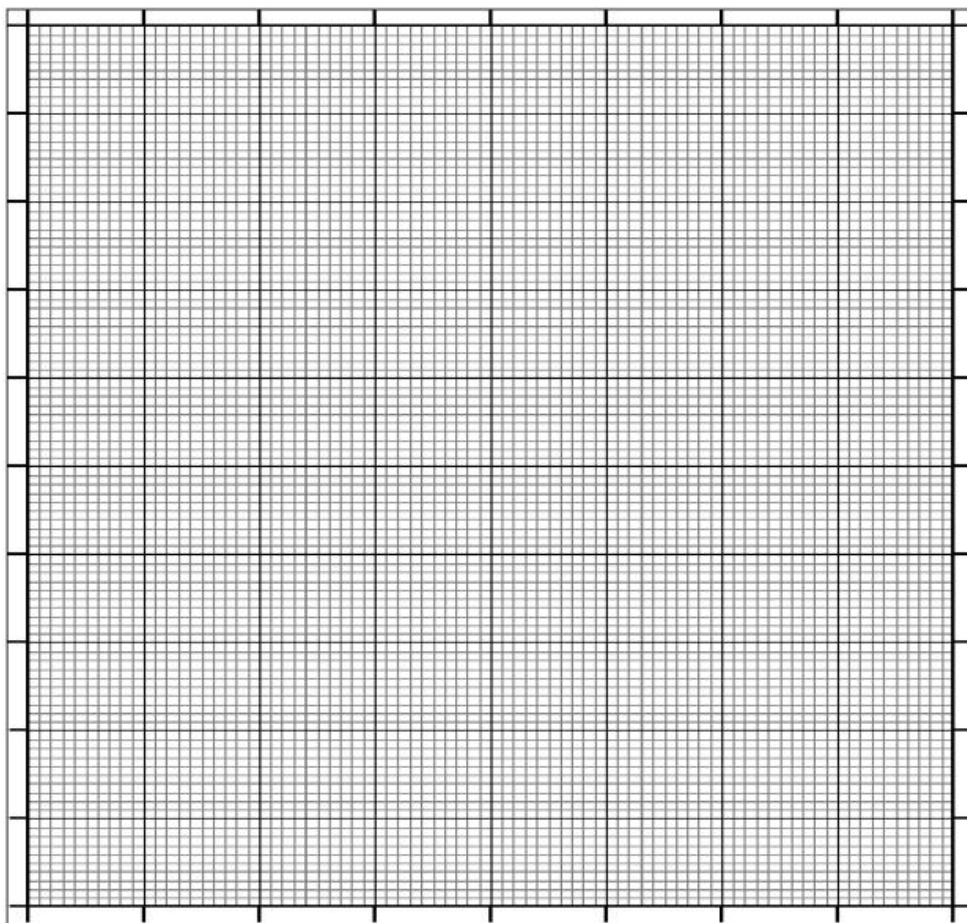
1.5.1. Indicate which illustration best expresses the description given in 1.5.

ANSWER:

1.5.2. Select from the following options the statement that provides the reason to the answer to 1.5.1:

ANSWER:

1.6.1. Draw a Cartesian graph of comparative lines for absorbance as a function of wavelength for the three samples, based on Table 6. Use different colors for each type of absorbance line.





Answer sheet

11th International Junior Science Olympiad,
Mendoza, Argentina

Time : 3 hs 30 min
Marks : 30

1.6.2. Using the information given in Table 6, indicate the wavelength that is needed to best distinguish NDGA from other substances.

ANSWER:

1.6.3. Calculate the NDGA concentration (mg L^{-1}) in each extract. Consider the extract was purified from other substances.

RESOLUTION

ANSWER:

1.6.4. Using the information in Table 6 and the values for each absorbance, indicate the species corresponding to each extract.



Answer sheet

11th International Junior Science Olympiad,
Mendoza, Argentina

Time : 3 hs 30 min
Marks : 30

ANSWER:

Extract A:

Extract B:

1.6.5. Determine the mass of fresh *L. divaricata* leaves that you need considering that fresh leaves have a moisture content of 8% w/w (water density at 20°C is 1 g cm⁻³).

RESOLUTION

ANSWER:



Answer sheet

11th International Junior Science Olympiad,
Mendoza, Argentina

Time : 3 hs 30 min
Marks : 30

PROBLEM 2

2.1.1. Write the chemical reactions needed to obtain the acids derived from SO₃ and CO₂ when combined with water.

Answer:

2.1.2. The unbalanced formation reaction of nitric acid in acid rain is:



Write the half-reactions and the balanced equation.

RESOLUTION:



Answer sheet

11th International Junior Science Olympiad,
Mendoza, Argentina

Time : 3 hs 30 min
Marks : 30

Answer:

2.2.1. Determine the solubility in moles per liter of aluminum hydroxide ($\text{Al}(\text{OH})_3$) in the lake water which has a pH value of 5.2, knowing that the K_{sp} (solubility product) value is 5×10^{-33} .

RESOLUTION

Answer:

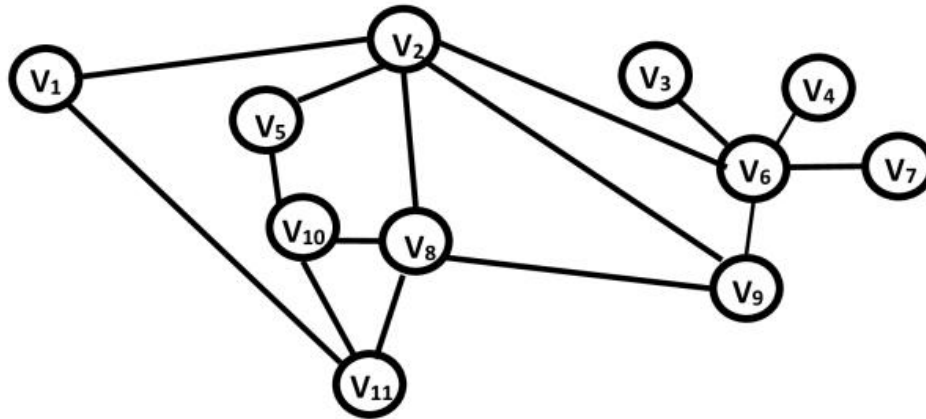


Figure 8: Water piping network

2.3.1. Determine the maximum number of pipes that can be removed without interrupting the water supplying every distribution point.

Answer:

2.4.1. Compute the average value of lead in blood for each sample. Indicate which of them, if any, is above the toxicity levels, writing an A for adults, a C for children, and a B for both

Answer:

Adults' sample mean:

Children's sample mean:

Sample/s above the toxicity levels:

2.5.1. Calculate Earth's equilibrium temperature without the absorption of the atmosphere (Figure 9a). Express your results in K and °C.

The intensity I (W m^{-2}) radiated by a black body follows Stefan-Boltzmann's Law:

$$I = \sigma T^4, \text{ where } \sigma = 5,67 \times 10^{-8} \text{W m}^{-2} \text{K}^{-4}$$

Assume that the Earth radiates energy as a black body.

RESOLUTION:

Answer:

2.5.2. Find the equilibrium temperature of the Earth with the atmosphere (Figure 9b), assuming that the atmosphere absorbs all the radiation emitted by the surface, and reemits it back to both the Earth and Space in equal proportions. Start out with intensity balance on the Earth surface and on the atmosphere.

Hint:

Assume that the atmosphere only absorbs energy from the Earth surface, and that both emit energy as a black body.



RESOLUTION:

Answer:

2.6.1. In this context, calculate the minimum amount of energy needed to completely melt a block of 10000kg of ice, initially at -10°C .

Thermodynamic constants:

Specific heat capacity of Ice: $c = 2.093 \text{ Jg}^{-1}\text{K}^{-1}$

Latent heat of ice fusion: $l = 333.7 \text{ J g}^{-1}$

RESOLUTION:



11th International Junior Science Olympiad,
Mendoza, Argentina

Time : 3 hs 30 min
Marks : 30

Answer sheet

Answer:

PROBLEM 3

3.1.1. Based on the information shown on Table A and Table B, mark with a cross (X) on Table A the secretory structure which produces the enzyme involved in digesting the starch that is present in the slice of toast. Then, use the corresponding number given to the enzyme shown on Table B, to match the Structure where this enzyme is produced.

Hint: the same enzyme may be produced by more than one structure.

Table A		
STRUCTURE	SECRETORY STRUCTURE INVOLVED IN THE DIGESTION OF STARCH	ENZYME
Liver		
Stomach		
Salivary Glands		
Large intestine		
Pancreas		
Esophagus		
Small Intestine		

Table B	
1	Phospholipase
2	Maltase
3	Amylase
4	Lipase
5	Glucosidase
6	Sucrase

3.1.2. Fill in Table C (indicated on the Answer Sheet) which shows enzymatic reactions. Write the corresponding letter of the enzyme in the green box and the corresponding number for the products in the blue boxes (each number may be used more than once).

ENZYMES		PRODUCTS	
A	Creatin kinase	1	Maltose
B	Amylase	2	Glucose
C	Lactase	3	Fructose
D	Glucosidase	4	Lactose
E	Sucrase	5	Galactose
F	Maltase	6	Saccharose (sucrose)

Table C		
starch	→ <input style="border: 1px solid green; width: 30px; height: 20px;" type="text"/>	<input style="border: 1px solid blue; width: 30px; height: 20px;" type="text"/>
maltose	→ <input style="border: 1px solid green; width: 30px; height: 20px;" type="text"/>	<input style="border: 1px solid blue; width: 30px; height: 20px;" type="text"/> + <input style="border: 1px solid blue; width: 30px; height: 20px;" type="text"/>
lactose	→ <input style="border: 1px solid green; width: 30px; height: 20px;" type="text"/>	<input style="border: 1px solid blue; width: 30px; height: 20px;" type="text"/> + <input style="border: 1px solid blue; width: 30px; height: 20px;" type="text"/>
saccharose (sucrose)	→ <input style="border: 1px solid green; width: 30px; height: 20px;" type="text"/>	<input style="border: 1px solid blue; width: 30px; height: 20px;" type="text"/> + <input style="border: 1px solid blue; width: 30px; height: 20px;" type="text"/>

3.2.1 Table D shows muscular contraction processes. Complete Table E (indicated in Answer Sheet), indicating the letter of the process in the order in which they occur.

Table D: Processes of muscle contraction	
A.	ATP is hydrolyzed to ADP + Pi (inorganic phosphorus) and the myosin head is separated from the active site.
B.	Acetylcholine acts on a local area of the sarcolemma to open multiple membrane protein channels. This allows the entry of large amounts of sodium ions into the sarcolemma, which initiates an action potential in the muscle fiber.
C.	The action potential depolarizes the sarcolemma. The release of Ca ⁺⁺ ions from the sarcoplasmic reticulum occurs.
D.	Ca ⁺⁺ ions are pumped back into the sarcoplasmic reticulum, where they remain until the arrival of a new action potential to the muscle.
E.	An action potential reaches the neuromuscular junction (synapse) of a motor neuron and a muscle, acetylcholine is released from the axon terminal.
F.	Ca ⁺⁺ ions initiate attractive forces between the actin and myosin. Filaments of myosin and actin are arranged next to each other within the sarcomere so that they can interact in an organized fashion resulting in muscle contraction. During contraction, myosin heads bind actin and pull the filaments in towards the center.

Tabla E	
ORDER	CORRESPONDING LETTER
1	
2	
3	
4	
5	
6	

3.2.2 Figure 11 represents muscle contraction. Write the letter corresponding to each process in the space provided.

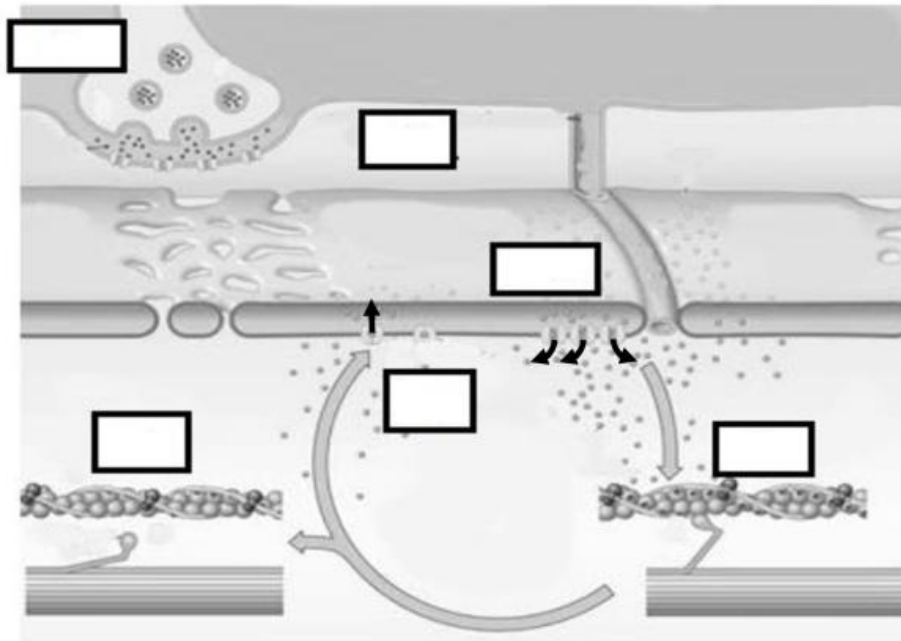


Figure 11: Muscle contraction representation.

3.3.1. Calculate the minimum amount of "engines" a muscle should utilize in lifting a mass of 50 kg. (Acceleration of gravity: 9.81 m s^{-2})

RESOLUTION:

ANSWER:



Answer sheet

11th International Junior Science Olympiad,
Mendoza, Argentina

Time : 3 hs 30 min
Marks : 30

3.3.2. Calculate the power developed by the myosin engine measured in J s^{-1} .

RESOLUTION:

ANSWER:

3.4.1. If the food ingested at breakfast by the athlete is equivalent to 90 g of glucose, calculate the mass of carbon dioxide (CO_2) produced as a result of complete combustion. (Relative atomic mass C= 12; O=16; H=1).

RESOLUTION:

ANSWER:

3.4.2. Calculate the number of oxygen atoms in 90 g of glucose molecules.

RESOLUTION:

ANSWER:

3.5.1. During her straight line path, her velocity follows the graph as shown in the figure below. Find the instantaneous acceleration at points A, B and C.

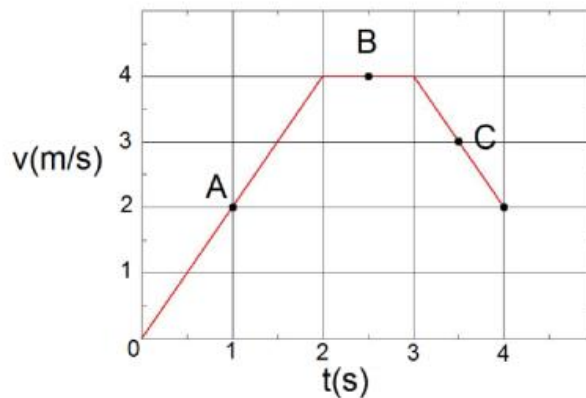


Figure 12: Velocity as a function of time

RESOLUTION



Answer sheet

11th International Junior Science Olympiad,
Mendoza, Argentina

Time : 3 hs 30 min
Marks : 30

ANSWER:

3.5.2. Calculate the distance she runs in the first two seconds the race.

RESOLUTION:

ANSWER:

3.5.3. Calculate the minimum radius of her circular path. Consider a constant speed along the whole path.

RESOLUTION:

ANSWER:

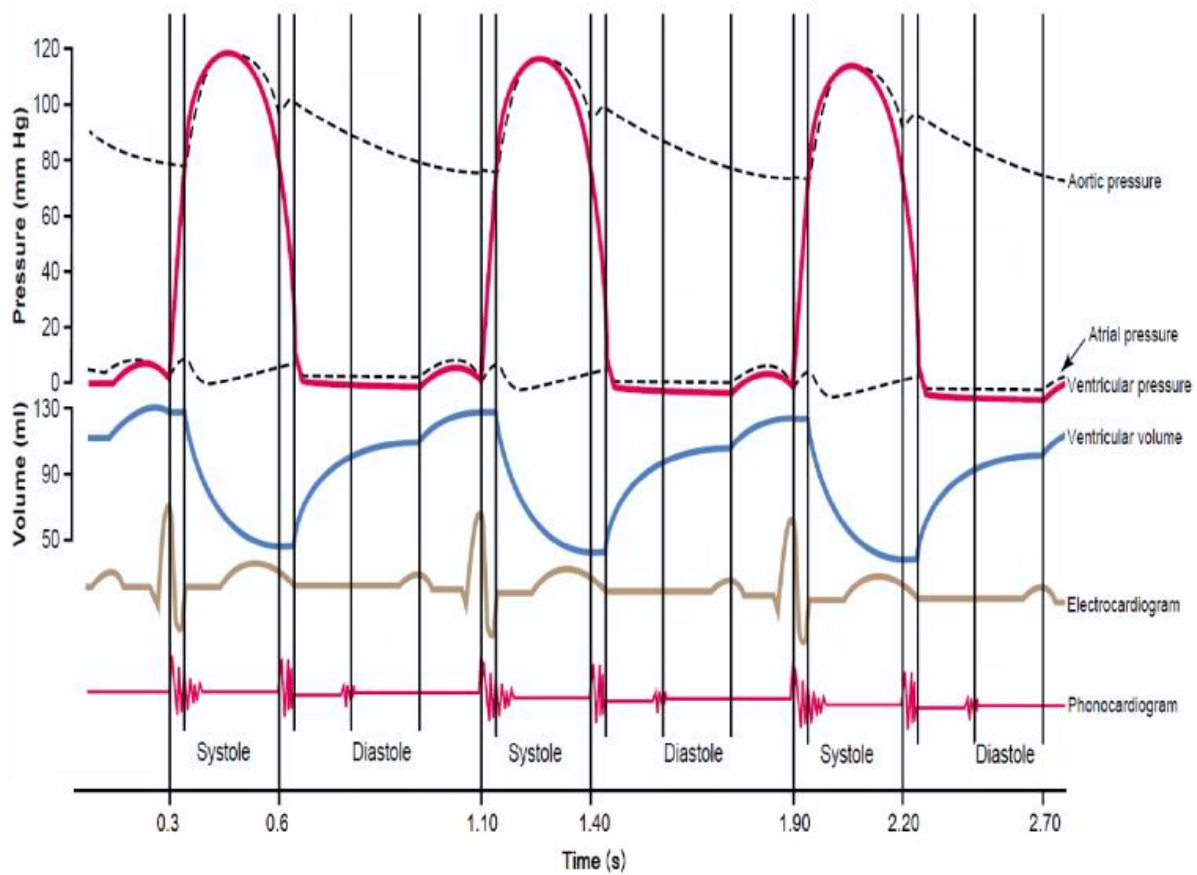


Figure 13: Various events occurring during three cardiac cycles, for different parts of the heart

3.6.1. Using the information shown in the graph, compute the time period of one cardiac cycle (in seconds).

RESOLUTION:

ANSWER:

3.6.2. Calculate the corresponding heart rate (cardiac cycles per minute).

RESOLUTION:

ANSWER:

3.6.3. Indicate in which time intervals ventricular volume decreases considering that intervals in which the volume remains constant last 0.05 seconds.

ANSWER:

3.6.4. Indicate the maximum value observed for ventricular pressure.

ANSWER:

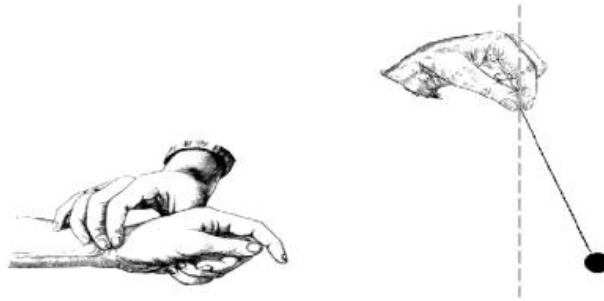


Figure 14: Pulse measurement using a simple pendulum.

3.7.1. Calculate the length of the pendulum used by the student, the period of simple pendulum is given by $T = 2\pi \sqrt{\frac{L}{g}}$

Being:

L the length of the pendulum

$g = 9.81 \text{ m s}^{-2}$

RESOLUTION:



Answer sheet

11th International Junior Science Olympiad,
Mendoza, Argentina

Time : 3 hs 30 min
Marks : 30

--

ANSWER:
